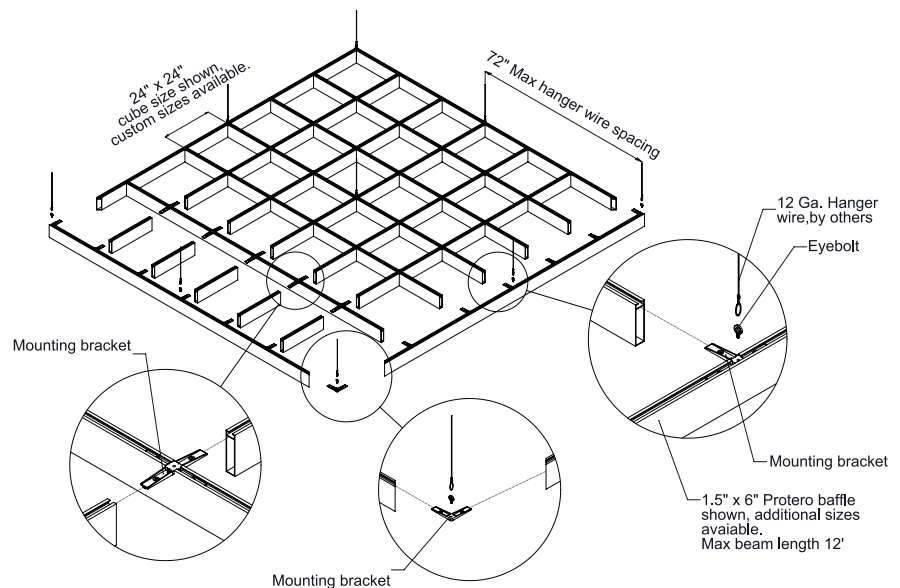




Cube Open Cell features interconnected beams that form shapes from traditional cubes to bespoke designs in floating and wall to wall configurations.

MAIN ASSEMBLY ▾



PHYSICAL DATA

- Material substrate - Aluminum | Extruded
- Thickness .08 -.125 (profile dependent)
- Fire Performance - Class A: Tested per ASTM E84. Flame Spread Index 25 or less. Smoke Developed Index 50 or less. CAN/ULC S102 surface burning characteristics. Flame Spread Rating 25 or less. Smoke Developed Classification 50 or less.
- Weight - Varies - 1.03 - 1.92 lbs./ln.ft.
- Warranty - One Year Limited
- Seismic areas - Cube Open Cells have been engineered for use in all seismic areas. Installations may require additional attachment from baffle to suspension bar. Check with local code officials or a licensed engineer for additional requirements.
- Surface Finish - Factory-applied polyester paint. Available in Standard Colors and Wood Look Powder Coated, post-production finishes. Custom colors also available

SUSTAINABILITY

LEED CONTRIBUTION -

- LEED BD+C v4 (MR: Regional & Recycled Materials).
- ID+C EQ: Low-Emitting Materials.
- No VOCs.
- EPD available.
- Aluminum contains up to 80% recycled content.

LEED® is a registered trademark of the U.S. Green Building Council

FEATURES

- Extruded profiles can be mitered, bent, used horizontally and vertically.
- Custom sizes & shapes - At Maxxit custom is what we do best.
 - ▶ Custom shapes & sizes available
 - ▶ Custom lengths up to 24'
- Standard sizes - In addition to custom we also have quick ship standard products available made to order.
 - ▶ Lengths - up to 12'
 - ▶ Standard Size - 1-3/8"x 3-3/8"
 - ▶ Standard Size - 1-1/2"x 6"
 - ▶ Standard Size - 2"x 6"
- Unlimited finish options - custom colors, wood looks, films.
- Quick ship and expedited shipping.
- Lightweight & easy to install.
- Versatile attachment options for Unistrut®, 15/16" HD Grid and Cable hung applications.
- Cleanable using CDC recommended and EPA-approved disinfectants for fog, spray & wipe.

WOOD LOOK FINISHES

Standard Powder Coated Paint Finishes (Interior & Exterior) Formaldehyde-Free



Custom Colors

FIND YOUR PERFECT MATCH

At Maxxit we have a passion for finishes; wood, metallic, oil rubbed, whatever your challenge is we can match it!



Send us a color sample so we can quickly provide a color match.

Standard Laminated (Film) Finishes (Interior only). Formaldehyde-free



STANDARD COLORS

Maxxit powder coat finishes offer superior chemical, scratch and UV resistance, they do not emit VOC's and are available in a broad range of textures, glosses and specialty looks.

Powder Coated Paint Finishes (Interior & Exterior) Formaldehyde-Free

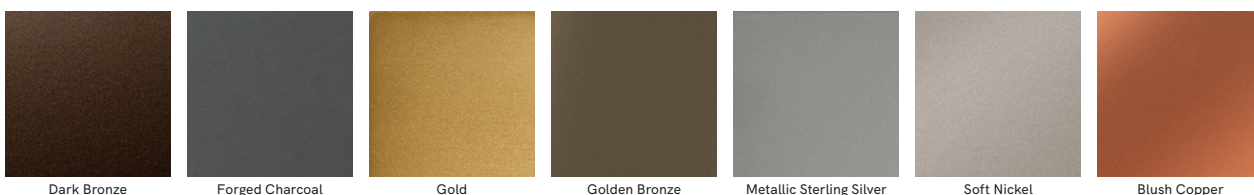


Custom Colors



Custom colors available

Powder Coated, Bonded Metallic Finishes (Interior & Exterior) Formaldehyde-Free



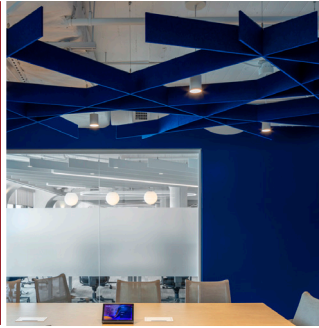


AERO:Form™ DESIGNS

CLOUDS ▶



CROSSROADS OPEN CELL ▶
Felt



CROSSROADS OPEN CELL ▶
Metal



CUBE OPEN CELL ▶
Felt, Blade



CUBE OPEN CELL ▶
Felt, Profile



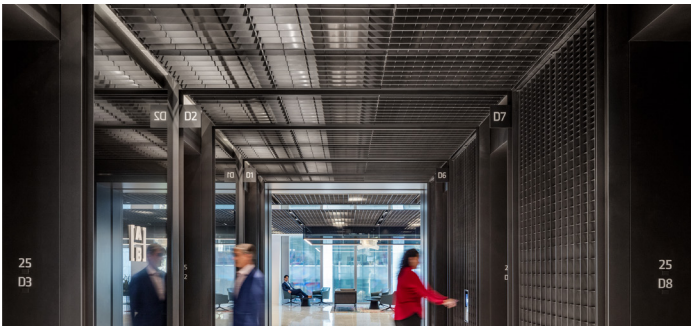
CUBE OPEN CELL ▶
Metal, Extruded



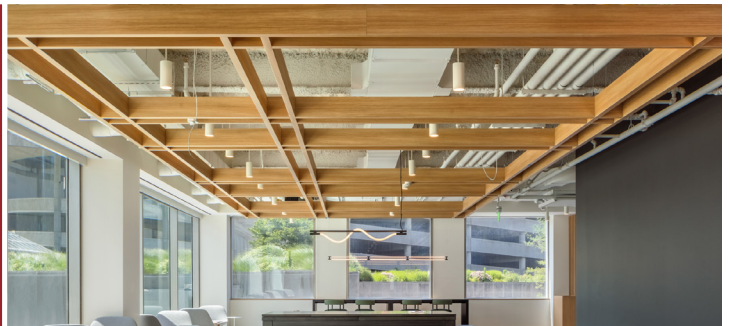
CUBE OPEN CELL ▶
Metal, Fabricated



GRILLE OPEN CELL ▶



PARALLEL OPEN CELL ▶



PENDANTS ▶

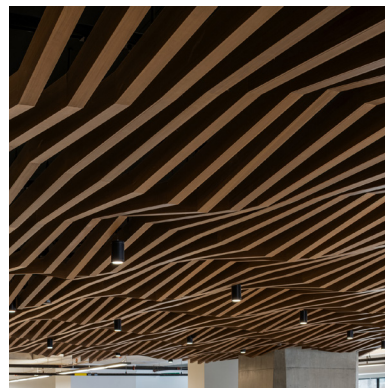


TRI-LATERAL OPEN CELL ▶



WHERE CREATIVE ENGINEERING MEETS ARCHITECTURAL VISION

At Maxxit, we combine creative engineering, advanced manufacturing, and close collaboration to help architects and designers bring bold ideas to life. From standard to custom solutions, we turn imagination into precision-built reality.



Co:LAB Studio

Our custom design service empowers architects and designers to realize unique visions through tailored solutions, material innovation, and expert collaboration — turning bold ideas into architectural realities.