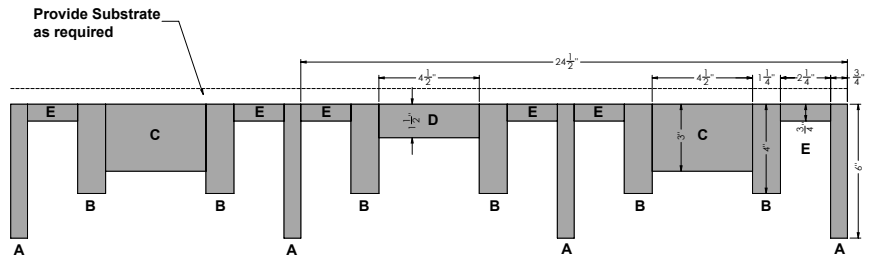




Protero Elevations create visual intrigue in large format and standalone applications. Configurations include horizontal, vertical and 90 degree.

MAIN ASSEMBLY



PHYSICAL DATA

- Material substrate - Aluminum | Extruded
- Thickness .100"
- Fire Performance - Class A: Tested per ASTM E84. Flame Spread Index 25 or less. Smoke Developed Index 50 or less. CAN/ULC S102 surface burning characteristics. Flame Spread Rating 25 or less. Smoke Developed Classification 50 or less.
- Weight - Varies - 1.03 - 1.92 lbs./ln.ft.
- Warranty - One Year Limited
- Seismic areas - Protero has been engineered for use in all seismic areas. Installations may require additional attachment from baffle to suspension bar. Check with local code officials or a licensed engineer for additional requirements.
- Surface Finish - Factory-applied polyester paint. Available in Standard Colors and Wood Look Powder Coated, post-production finishes. Custom colors also available

SUSTAINABILITY

CONTRIBUTES TO LEED® POINTS -

- LEED® BD+C: New Construction v4
 - ▶ MR: Regional Materials
 - ▶ MR: Recycled Content
- LEED® BD+C: Healthcare v4
 - ▶ MR: Design for Flexibility
- LEED ID+C: Commercial Interiors v4
 - ▶ EQ: Low-Emitting Material
- No VOC'S: No added urea-formaldehyde
- EPD 'Environmental Product Declaration' for raw material components
- Recycled Content - up to 80%

LEED® is a registered trademark of the U.S. Green Building Council

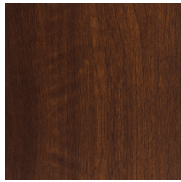
FEATURES

- Extruded profiles can be mitered, bent, used horizontally and vertically
- Custom sizes & shapes - At Maxxit custom is what we do best.
 - ▶ Custom shapes & sizes available
 - ▶ Custom lengths up to 24'
- Standard sizes - In addition to custom we also have quick ship standard products available made to order
 - ▶ Lengths - up to 12'
 - ▶ Standard Size - 1-3/8"x 3-3/8"
 - ▶ Standard Size - 1-1/2"x 6"
 - ▶ Standard Size - 2"x 6"
- Unlimited finish options - custom colors, wood looks, films & wood veneers
 - ▶ Plus 17 standard wood look finishes
- Quick ship and expedited shipping
- Lightweight & easy to install
- Cleanable using CDC recommended and EPA-approved disinfectants for fog, spray & wipe



WOOD LOOK FINISHES

Standard Powder Coated Paint Finishes (Interior & Exterior) Formaldehyde-Free



National Walnut



Chestnut



Rosewood



European Cherry



Knotty Pine



Oak Fine



Maple



American Douglas



American Maple



Teak

Custom Colors

FIND YOUR PERFECT MATCH

At Maxxit we have a passion for finishes; wood, metallic, oil rubbed, whatever your challenge is we can match it!



Send us a color sample so we can quickly provide a color match.

Standard Laminated (Film) Finishes (interior only). Formaldehyde-free



Canadian Oak



White Oak



American Natural



Italian Walnut



North Oak



Black Walnut

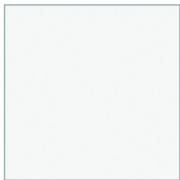
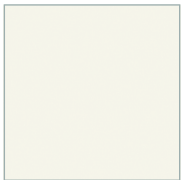
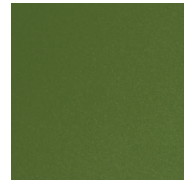
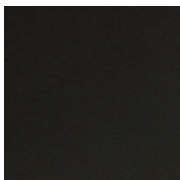
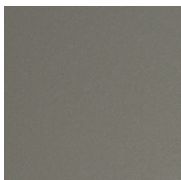
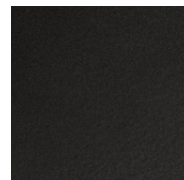


Brazilian Walnut

STANDARD COLORS

Maxxit powder coat finishes offer superior chemical, scratch and UV resistance, they do not emit VOC's and are available in a broad range of textures, glosses and specialty looks.

Powder Coated Paint Finishes (Interior & Exterior) Formaldehyde-Free

Black
(25-35 Gloss)Snow White
(25-30 Gloss) | LRV 83-84White
(17-20 Gloss) | LRV 79-80Blush Rose
(20 Gloss)Sunrise Yellow
(20 Gloss)Forest Green
(20 Gloss)Pure Orange
(20 Gloss)Gold
(20 Gloss)Metallic Bronze
(20 Gloss)Tan Straw
(20 Gloss)Mid Beige
(20 Gloss)Metallic Sterling Silver
(20 Gloss)Charcoal
(20 Gloss)Sterling Silver
(20 Gloss)Grey
(65-75 Gloss)

Custom Colors



Custom colors available



PROTERO DESIGNS

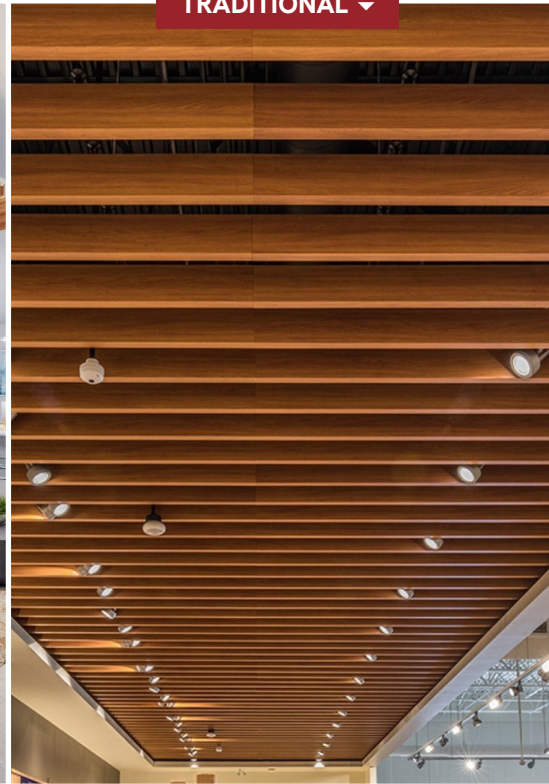
NETWORKS ▾



ELEVATIONS ▾



TRADITIONAL ▾



WALL SLATS ▲



PARTITIONS ▲



CONTOUR ▲

DESIGN REALIZED

From the familiar to the truly one of a kind, Maxxit brings your design vision to life. With ceilings and walls crafted from Wood, Felt, Metal, Composites & more there is no limit to what we can create together.

