

**Silentia Profile** baffles with LED lighting combine bold styling, acoustic comfort and seamlessly integrated lighting for the ultimate in design efficiency.

## PHYSICAL DATA

- Material - (PET) polyester felt
- Felt thickness - 9MM, 3/8" nominal
- Fire Performance - Class A per ASTM E84, FSI 25 or less, SDI 450 or less. CAN/ULC - S102, FSR 5, SDC 70
- Acoustics - NRC = 0.85 per ISO 11654
- Weight - 1.38 lbs. / sq.ft.
- Warranty - One Year Limited - LED lighting components 5 year limited
- Variation - With all felt products color and texture may vary from order to order; adequate attic stock should be ordered.
- Seismic areas - Silentia has been engineered for use in all seismic areas. Check with local code officials or a licensed engineer for additional requirements.
- Applications
  - ▶ Silentia is not approved for exterior application
  - ▶ Do not install near sources of heat greater than 158° F

## SUSTAINABILITY

### CONTRIBUTES TO LEED® POINTS -

- LEED BD+C: New Construction v4
  - ▶ MR: Building product disclosure
  - ▶ MR: Recycled Content
- LEED BD+C: Schools v4
  - ▶ EQ: Acoustic Performance
- LEED ID+C: Commercial Interiors v4
  - ▶ EQ: Low-Emitting Material
- Compliant with California Department of Public Health
- Recycled Content - up to 60% Pre-Consumer Polyester Felt

LEED® is a registered trademark of the U.S. Green Building Council

## FEATURES

- Sleek flush mount design creates seamless integration of felt baffle and LED lighting.
- Color temperatures offered: 2700, 3000, 3500, 4100, 5300, 6500, Tunable, RGBW+4100
- LED Systems: Standard 326 -360 lm/ft, Low 180 lm/ft
- Driver options: 5 in 1 24V 96W, 5 in 1 24V 192W, DMX Driver
- All lighting components UL listed, 5 year warranty
- 35 'Quick Ship' colors to choose from
- Custom sizes & shapes - At Maxxit custom is what we do best. We will make any shape or size you can design
- Standard sizes - in addition to custom we also have standard products available made to order in 1/4" increments
  - ▶ Lengths - up to 8'
  - ▶ Depths - up to 12"
  - ▶ Width - 1-1/2", 2"
- Lightweight, pre-assembled & easy to install
- Versatile attachment options for Unistrut® 15/16" HD Grid and Cable hung applications
- Easy plenum access - attachment hardware allows baffles to unhook for easy plenum access and adjustment during installation
- Cleanable using CDC recommended and EPA-approved disinfectants for fog, spray & wipe

# COLOR SELECTION

## 35 Quick Ship Colors



## Woodgrain Options



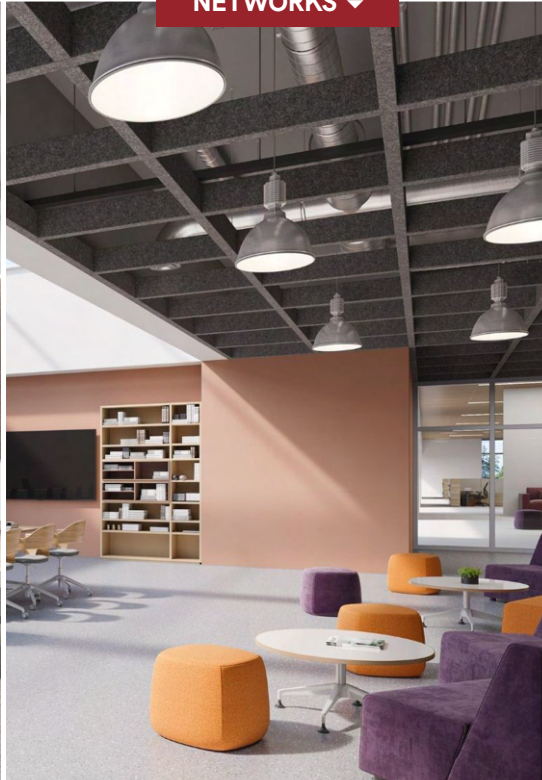


# SILENTIA PROFILE DESIGNS

ELEVATIONS ▾



NETWORKS ▾



TRADITIONAL ▾



ANGLE ▲



SHUFFLE ▲

# DESIGN REALIZED

From the familiar to the truly one of a kind, Maxxit brings your design vision to life. With ceilings and walls crafted from Wood, Felt, Metal, Composites & more there is no limit to what we can create together.

