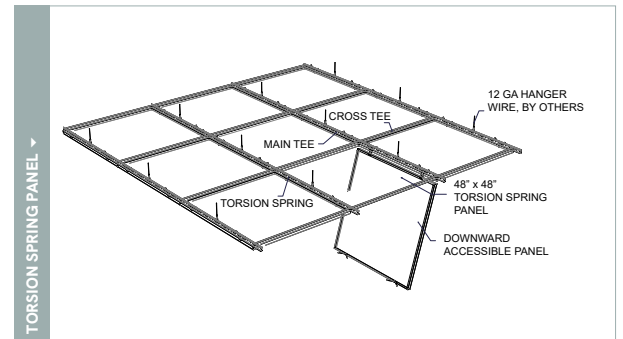
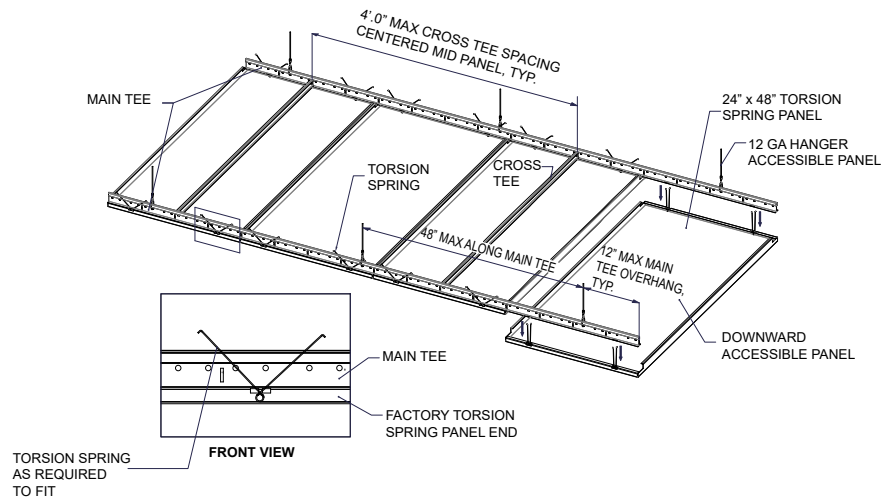




Traditional Panels are highly durable, precision engineered for a smooth, uniform appearance and easy plenum access.

MAIN ASSEMBLY ▾



PHYSICAL DATA

- Material substrate - Aluminum | Fabricated
- Thickness .041" - .060" design dependent
- Fire Performance - Class A: Tested per ASTM E84. Flame Spread Index 25 or less. Smoke Developed Index 50 or less. CAN/ULC S102 surface burning characteristics. Flame Spread Rating 25 or less. Smoke Developed Classification 50 or less.
- Weight - Varies from 1.0-1.5 lbs./sq.ft.
- Warranty - One Year Limited
- Surface Finish - Factory-applied polyester paint. Available in Standard Colors, Color Matched and Wood Look Powder-Coated.
- Seismic areas - Traditional panels have been engineered for use in all seismic areas. Installations may require additional attachment from panel to suspension bar. Check with local code officials or a licensed engineer for additional requirements.
- Acoustical Options - Perforated panels are supplied with acoustic infills to absorb sound - NRC values vary based on design and application.

SUSTAINABILITY

LEED CONTRIBUTION -

- LEED BD+C v4 (MR: Regional & Recycled Materials).
- Schools EQ: Acoustic Performance.
- ID+C EQ: Low-Emitting Materials.
- No VOCs.
- EPD available.
- Aluminum contains up to 80% recycled content.

LEED® is a registered trademark of the U.S. Green Building Council

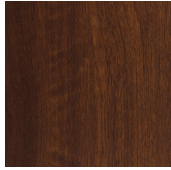
FEATURES

- Offer a clean, uniform design that enhances acoustics while providing a classic, functional ceiling finish.
- Unlimited finish options - custom colors, wood looks, films.
- Custom sizes & shapes - At Maxxit custom is what we do best. We will make any shape or size you can design.
- Standard sizes - in addition to custom we also have quick ship standard products available made to order.
 - 2' x 2' panel
 - 2' x 4' panel
 - 3' x 3' panel
- Quick ship and expedited shipping.
- Available in acoustic perforated styles.
- Lightweight, pre-assembled & easy to install.
- Versatile attachment options; available in torsion spring, hook on and multiple lay-in designs. Panels can be designed to work with Maxxit suspension systems or industry standard grid systems.
- Easy plenum access.
- Cleanable using CDC recommended and EPA-approved disinfectants for fog, spray & wipe.
- Integrated lighting options available.



WOOD LOOK FINISHES

Standard Powder Coated Paint Finishes (Interior & Exterior) Formaldehyde-Free



National Walnut



Chestnut



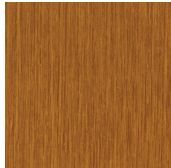
Rosewood



European Cherry



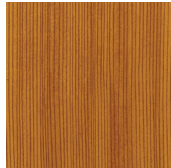
Knotty Pine



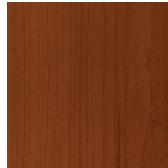
Oak Fine



Maple



American Douglas



American Maple



Teak

Custom Colors

FIND YOUR PERFECT MATCH

At Maxxit we have a passion for finishes; wood, metallic, oil rubbed, whatever your challenge is we can match it!



Send us a color sample so we can quickly provide a color match.

Standard Laminated (Film) Finishes (Interior only). Formaldehyde-free



Canadian Oak



White Oak



American Natural



Italian Walnut



North Oak



Black Walnut

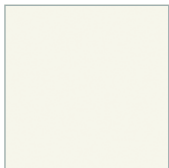
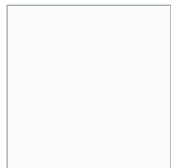
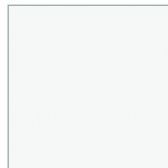
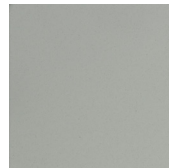
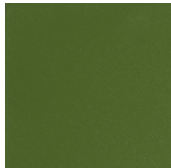
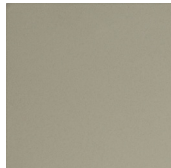
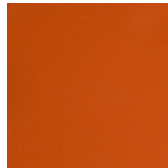


Brazilian Walnut

STANDARD COLORS

Maxxit powder coat finishes offer superior chemical, scratch and UV resistance, they do not emit VOC's and are available in a broad range of textures, glosses and specialty looks.

Powder Coated Paint Finishes (Interior & Exterior) Formaldehyde-Free

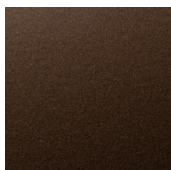
Black
(25-35 Gloss)White
(17-20 Gloss) | LRV 79-80Chalkstone White
2-6 Gloss | LRV 85-86Snow White
(25-30 Gloss) | LRV 83-84Sterling Silver
(20 Gloss)Sunrise Yellow
(20 Gloss)Tan Straw
(20 Gloss)Blush Rose
(20 Gloss)Forest Green
(20 Gloss)Grey
(65-75 Gloss)Mid Beige
(20 Gloss)Pure Orange
(20 Gloss)

Custom Colors

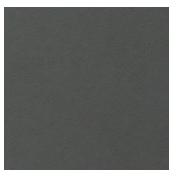


Custom colors available

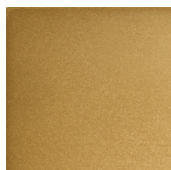
Powder Coated, Bonded Metallic Finishes (Interior & Exterior) Formaldehyde-Free



Dark Bronze



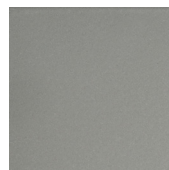
Forged Charcoal



Gold



Golden Bronze



Metallic Sterling Silver



Soft Nickel

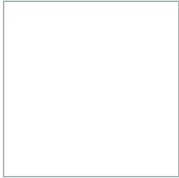
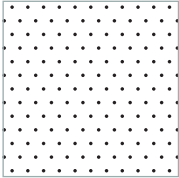
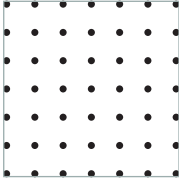
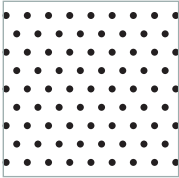
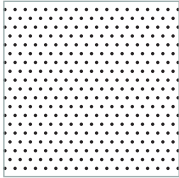
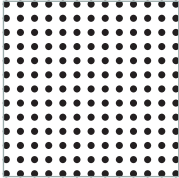
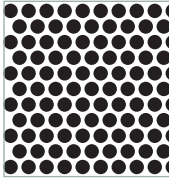
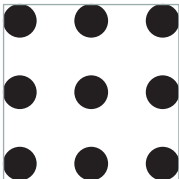
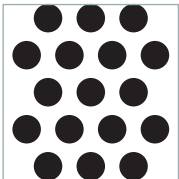
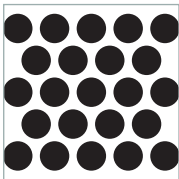


Blush Copper

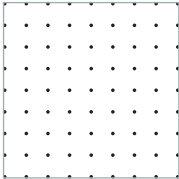
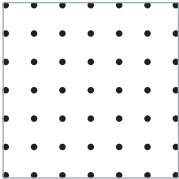
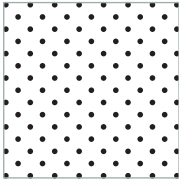
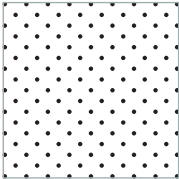
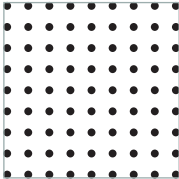

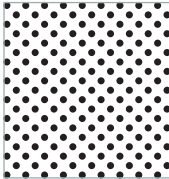
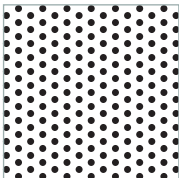
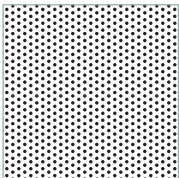
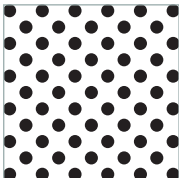
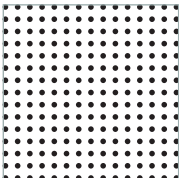
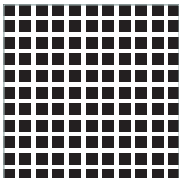
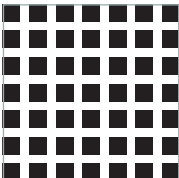
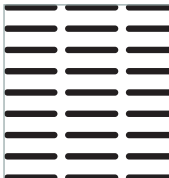
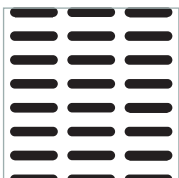
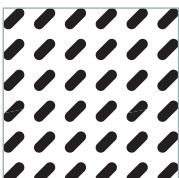
PERFORATIONS

Perforation patterns may be limited or not available for some product styles and designs. Perforation border size varies based on product style, size, and perforation pattern. For specific details, please reach out to your Maxxit representative.

Standard Perforations Angles - Staggered 60°

						
Unperforated	S02 Staggered Diameter 0.0625 Open area 4.50% Centers 0.2812	S03 Straight Diameter 0.125 Open area 4.90% Centers 0.5	S04 Staggered Diameter 0.125 Open area 9.90% Centers 0.3788	S05 Staggered Diameter 0.0625 Open area 10.10% Centers 0.1875	S06 Straight Diameter 0.125 Open area 19.60% Centers 0.25	S07 Staggered Diameter 0.25 Open area 58% Centers 0.3125
						
S08 Straight Diameter 0.5625 Open area 17.50% Centers 1.1908	S09 Staggered Diameter 0.5 Open area 40.30% Centers 0.75	S10 Staggered Diameter 0.5 Open area 58% Centers 0.625				

Premium Perforations Angles - Diagonal 45° | Staggered 60°

						
P11 Straight Diameter 0.0625 Open area 2.10% Centers 0.3788	P12 Straight Diameter 0.098 Open area 4.14% Centers 0.427	P13 Diagonal Diameter 0.098 Open area 8.28% Centers 0.3019	P14 Diagonal Diameter 0.078 Open area 26.53% Centers 0.1898	P15 Straight Diameter 0.1181 Open area 11.04% Centers 0.315	P16 Straight Diameter 0.2362 Open area 12.57% Centers 0.5906	P17 Diagonal Diameter 0.1181 Open area 22.09% Centers 0.2227
						
P18 Staggered Diameter 0.125 Open area 22.70% Centers 0.25	P19 Staggered Diameter 0.0625 Open area 22.70% Centers 0.125	P20 Diagonal Diameter 0.2362 Open area 25.14% Centers 0.4176	P21 Straight Diameter 0.098 Open area 16.55% Centers 0.2135	P22 Square Straight Hole Size 0.197 x 0.197 Open area 44.60% Centers 0.295	P23 Square Straight Hole Size 0.315 x 0.315 Open area 40.99% Centers 0.492	P24 Oblong Straight Hole Size 0.984 x 0.059 Open area 26% Centers 0.394
						
P25 Oblong Straight Hole Size 0.787 x 0.079 Open area 31.90% Centers 0.394	P26 Diagonal Hole Size 0.394 x 0.079 Open area 25.75% Centers 0.469					



PANEL:Form™ DESIGNS

BACKLIT
Ceiling



BACKLIT
Walls



CANOPY PARTITIONS



CONCAVE



DIMENSIONAL



DESIGN PERFORMED
Ceiling



DESIGN PERFORMED
Walls



MESH



MOZAIX



QUIET WALL



RADIUS



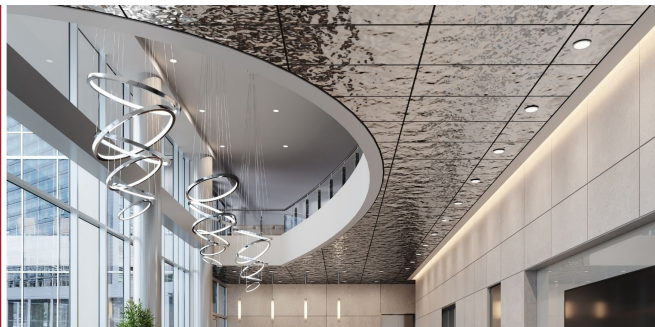
SEGMENTED



TRADITIONAL

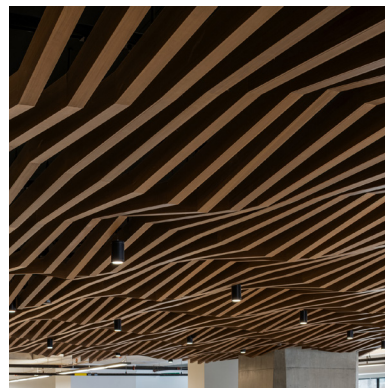


WATER RIPPLE



WHERE CREATIVE ENGINEERING MEETS ARCHITECTURAL VISION

At Maxxit, we combine creative engineering, advanced manufacturing, and close collaboration to help architects and designers bring bold ideas to life. From standard to custom solutions, we turn imagination into precision-built reality.



Co:LAB Studio

Our custom design service empowers architects and designers to realize unique visions through tailored solutions, material innovation, and expert collaboration — turning bold ideas into architectural realities.