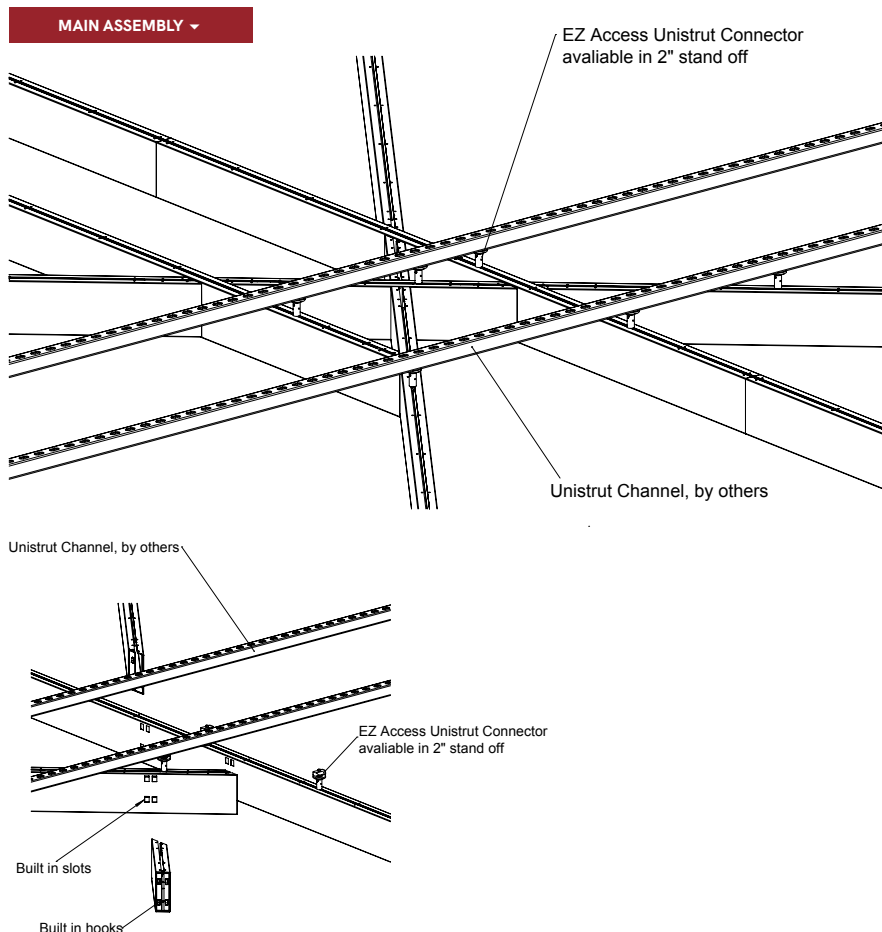




**Crossroads Open Cell** allows intersecting linear designs for a unique custom look that is easy to configure and install.



## PHYSICAL DATA

- Material substrate - Aluminum | Fabricated
- Thickness .041" - .060" design dependent
- Fire Performance - ASTM E84 Class A. CAN/ULC S102.2
- Weight - Varies from .67 - 1.10 lbs./ln.ft.
- Warranty - One Year Limited
- Surface Finish - Factory-applied polyester paint. Available in Standard Colors, Color Matched and Wood Look Powder-Coated.
- Seismic areas - Crossroads Open Cells have been engineered for use in all seismic areas. Installations may require additional attachment from baffle to suspension bar. Check with local code officials or a licensed engineer for additional requirements.
- Acoustical Options - Perforated baffles are supplied with acoustic infills to absorb sound - NRC values vary based on design and application.

## SUSTAINABILITY

### LEED CONTRIBUTION -

- LEED BD+C v4 (MR: Regional & Recycled Materials).
- Schools EQ: Acoustic Performance.
- ID+C EQ: Low-Emitting Materials.
- No VOCs.
- EPD available.
- Aluminum contains up to 80% recycled content.

LEED® is a registered trademark of the U.S. Green Building Council

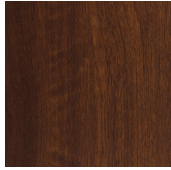
## FEATURES

- Create on trend open cell designs.
- Unlimited finish options - custom colors, wood looks, films.
- Custom sizes & shapes - At Maxxit custom is what we do best. We will make any shape or size you can design.
- Standard sizes - in addition to custom we also have quick ship standard products available made to order.
  - ▶ Lengths - up to 12'
  - ▶ Depths - up to 15"
  - ▶ Widths - up to 6"
- Quick ship and expedited shipping.
- Available in acoustic perforated styles.
- Lightweight & easy to install.
- Versatile attachment options for Unistrut® 15/16" HD Grid and Cable hung applications.
- Easy plenum access - attachment hardware allows baffles to slide for easy plenum access and adjustment during installation.
- Integrated lighting options available.



# WOOD LOOK FINISHES

## Standard Powder Coated Paint Finishes (Interior & Exterior) Formaldehyde-Free



National Walnut



Chestnut



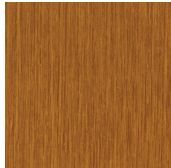
Rosewood



European Cherry



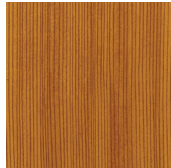
Knotty Pine



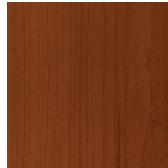
Oak Fine



Maple



American Douglas



American Maple



Teak

## Custom Colors

### FIND YOUR PERFECT MATCH

At Maxxit we have a passion for finishes; wood, metallic, oil rubbed, whatever your challenge is we can match it!



Send us a color sample so we can quickly provide a color match.

## Standard Laminated (Film) Finishes (Interior only). Formaldehyde-free



Canadian Oak



White Oak



American Natural



Italian Walnut



North Oak



Black Walnut

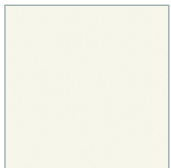
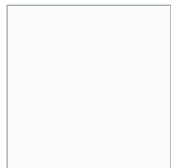
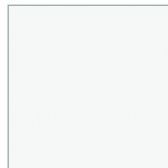
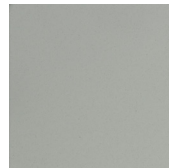
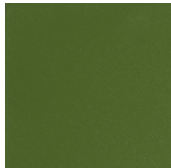
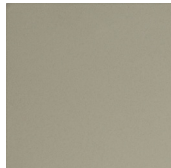
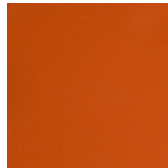


Brazilian Walnut

# STANDARD COLORS

Maxxit powder coat finishes offer superior chemical, scratch and UV resistance, they do not emit VOC's and are available in a broad range of textures, glosses and specialty looks.

## Powder Coated Paint Finishes (Interior & Exterior) Formaldehyde-Free

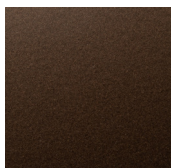
Black  
(25-35 Gloss)White  
(17-20 Gloss) | LRV 79-80Chalkstone White  
2-6 Gloss | LRV 85-86Snow White  
(25-30 Gloss) | LRV 83-84Sterling Silver  
(20 Gloss)Sunrise Yellow  
(20 Gloss)Tan Straw  
(20 Gloss)Blush Rose  
(20 Gloss)Forest Green  
(20 Gloss)Grey  
(65-75 Gloss)Mid Beige  
(20 Gloss)Pure Orange  
(20 Gloss)

## Custom Colors



Custom colors available

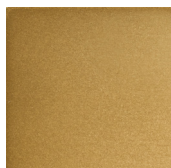
## Powder Coated, Bonded Metallic Finishes (Interior & Exterior) Formaldehyde-Free



Dark Bronze



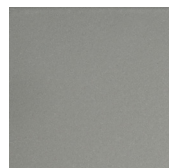
Forged Charcoal



Gold



Golden Bronze



Metallic Sterling Silver



Soft Nickel



Blush Copper

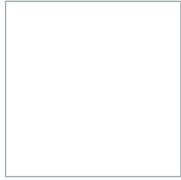




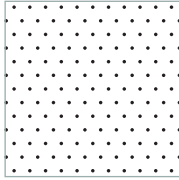
# PERFORATIONS

Perforation patterns may be limited or not available for some product styles and designs. Perforation border size varies based on product style, size, and perforation pattern. For specific details, please reach out to your Maxxit representative.

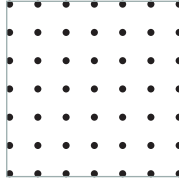
## Standard Perforations Angles - Staggered 60°



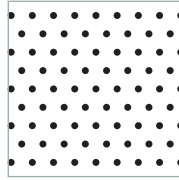
Unperforated



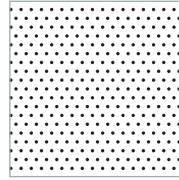
**S02 Staggered**  
Diameter 0.0625  
Open area 4.50%  
Centers 0.2812



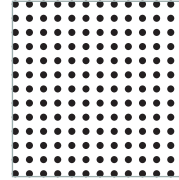
**S03 Straight**  
Diameter 0.125  
Open area 4.90%  
Centers 0.5



**S04 Staggered**  
Diameter 0.125  
Open area 9.90%  
Centers 0.3788

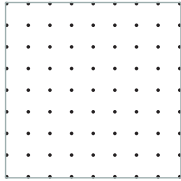


**S05 Staggered**  
Diameter 0.0625  
Open area 10.10%  
Centers 0.1875

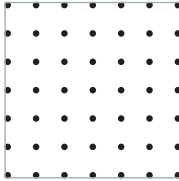


**S06 Straight**  
Diameter 0.125  
Open area 19.60%  
Centers 0.25

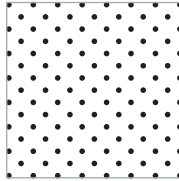
## Premium Perforations Angles - Diagonal 45° | Staggered 60°



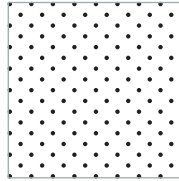
**P11 Straight**  
Diameter 0.0625  
Open area 2.10%  
Centers 0.3788



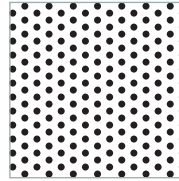
**P12 Straight**  
Diameter 0.098  
Open area 4.14%  
Centers 0.427



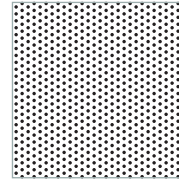
**P13 Diagonal**  
Diameter 0.098  
Open area 8.28%  
Centers 0.3019



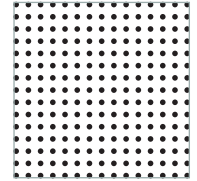
**P14 Diagonal**  
Diameter 0.078  
Open area 26.53%  
Centers 0.1898



**P18 Staggered**  
Diameter 0.125  
Open area 22.70%  
Centers 0.25



**P19 Staggered**  
Diameter 0.0625  
Open area 22.70%  
Centers 0.125



**P21 Straight**  
Diameter 0.098  
Open area 16.55%  
Centers 0.2135







# AERO:Form™ DESIGNS

CLOUDS ▶



CROSSROADS OPEN CELL ▶  
Felt



CROSSROADS OPEN CELL ▶  
Metal



CUBE OPEN CELL ▶  
Felt, Blade



CUBE OPEN CELL ▶  
Felt, Profile



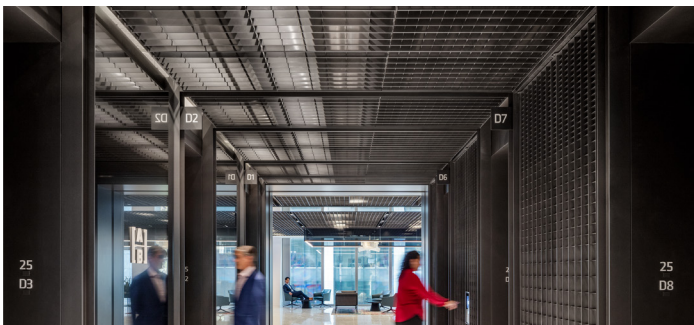
CUBE OPEN CELL ▶  
Metal, Extruded



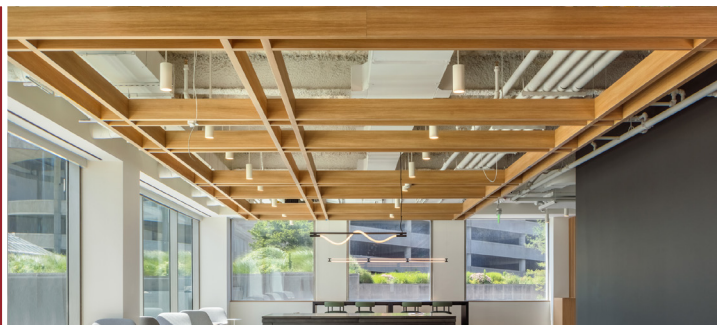
CUBE OPEN CELL ▶  
Metal, Fabricated



GRILLE OPEN CELL ▶



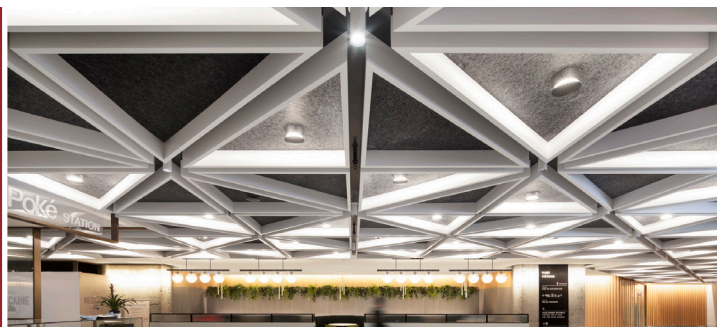
PARALLEL OPEN CELL ▶



PENDANTS ▶



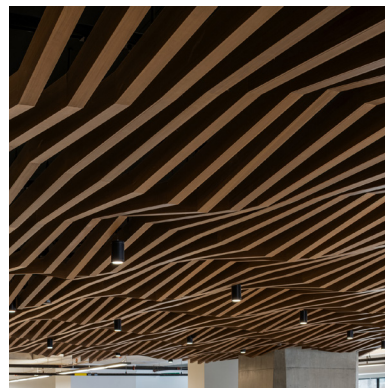
TRILATERAL OPEN CELL ▶





# WHERE CREATIVE ENGINEERING MEETS ARCHITECTURAL VISION

At Maxxit, we combine creative engineering, advanced manufacturing, and close collaboration to help architects and designers bring bold ideas to life. From standard to custom solutions, we turn imagination into precision-built reality.



## Co:LAB Studio

Our custom design service empowers architects and designers to realize unique visions through tailored solutions, material innovation, and expert collaboration — turning bold ideas into architectural realities.