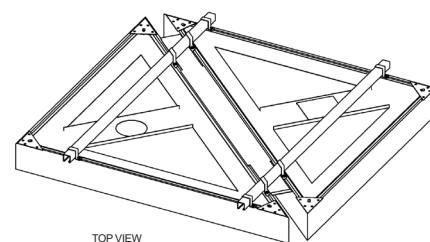
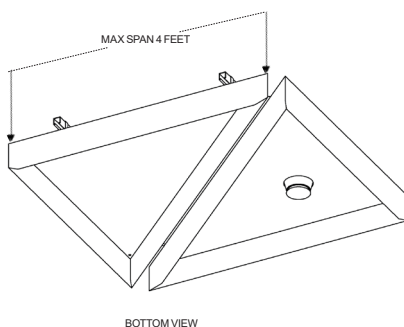




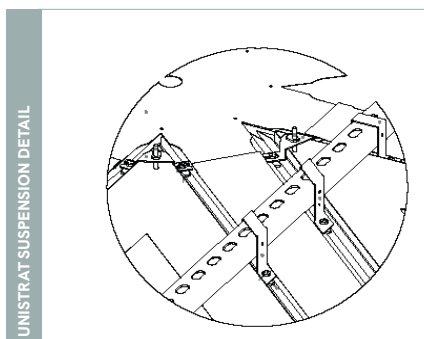
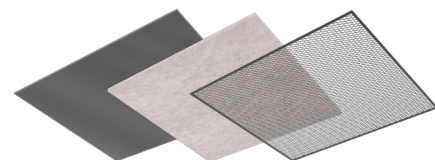
Trilateral Open Cell features triangular beam patterns with optional panels for design versatility.

#### MAIN ASSEMBLY ▾

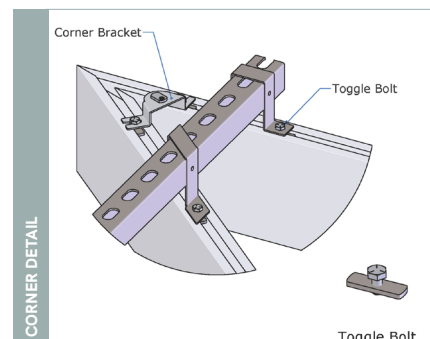


TOP VIEW

PANELS ARE AVAILABLE IN METAL, FELT AND METAL MESH



UNISTRUT SUSPENSION DETAIL



Corner Bracket

Toggle Bolt

Toggle Bolt

## PHYSICAL DATA

- Material substrate - Aluminum | Extruded
- Thickness .100"
- Fire Performance - Class A: Tested per ASTM E84. Flame Spread Index 25 or less. Smoke Developed Index 50 or less. CAN/ULC S102 surface burning characteristics. Flame Spread Rating 25 or less. Smoke Developed Classification 50 or less.
- Weight - Varies - 1.03 - 1.92 lbs./ln.ft.
- Warranty - One Year Limited
- Seismic areas - Protero has been engineered for use in all seismic areas. Installations may require additional attachment from baffle to suspension bar. Check with local code officials or a licensed engineer for additional requirements.
- Surface Finish (Beams) - Factory-applied polyester paint. Available in Standard Colors, Color Matched and Wood Look
- Surface Finish (Panels) - Factory-applied polyester paint. Available in Standard Colors, Color Matched, Stainless Steel, Wood Look and Felt colors

## SUSTAINABILITY

### LEED CONTRIBUTION -

- LEED BD+C v4 (MR: Regional & Recycled Materials).
- Schools EQ: Acoustic Performance.
- ID+C EQ: Low-Emitting Materials.
- No VOCs.
- EPD available.
- Aluminum contains up to 80% recycled content.

LEED® is a registered trademark of the U.S. Green Building Council

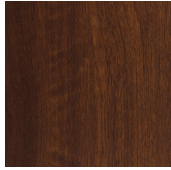
## FEATURES

- Extruded beam profiles deliver precise corner execution, resulting in a refined, high-end aesthetic
- Available as open cell or with metal, metal mesh and felt panels
- Integrated lighting options available
- Open-cell design seamlessly accommodates and provides easy access to lighting, sprinklers, and HVAC components
- Metal panels are available perforated with optional acoustic infills
- Standard sizes - In addition to custom we also have quick ship standard products available made to order
  - ▶ Lengths - up to 12'
  - ▶ Standard Size - 1-3/8"x 3-3/8"
  - ▶ Standard Size - 1-1/2"x 6"
  - ▶ Standard Size - 2"x 6"
- Quick ship and expedited shipping
- Versatile attachment options for Unistrut®, custom attachment solutions are available.
- Cleanable using CDC recommended and EPA-approved disinfectants for fog, spray & wipe



# WOOD LOOK FINISHES

## Standard Powder Coated Paint Finishes (Interior & Exterior) Formaldehyde-Free



National Walnut



Chestnut



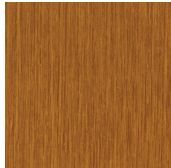
Rosewood



European Cherry



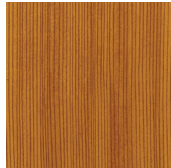
Knotty Pine



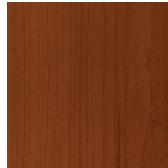
Oak Fine



Maple



American Douglas



American Maple



Teak

## Custom Colors

### FIND YOUR PERFECT MATCH

At Maxxit we have a passion for finishes; wood, metallic, oil rubbed, whatever your challenge is we can match it!



Send us a color sample so we can quickly provide a color match.

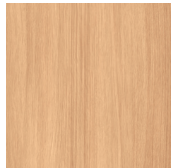
## Standard Laminated (Film) Finishes (Interior only). Formaldehyde-free



Canadian Oak



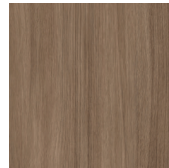
White Oak



American Natural



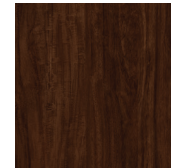
Italian Walnut



North Oak



Black Walnut

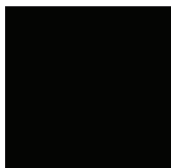
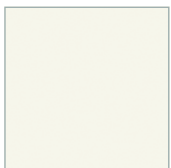
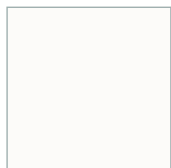
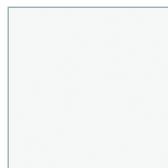
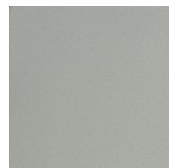
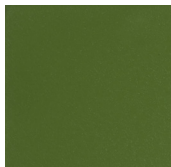
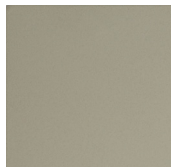
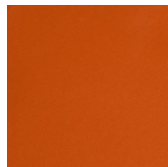


Brazilian Walnut

# STANDARD COLORS

Maxxit powder coat finishes offer superior chemical, scratch and UV resistance, they do not emit VOC's and are available in a broad range of textures, glosses and specialty looks.

## Powder Coated Paint Finishes (Interior & Exterior) Formaldehyde-Free

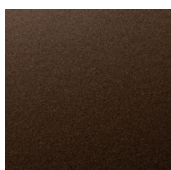
Black  
(25-35 Gloss)White  
(17-20 Gloss) | LRV 79-80Chalkstone White  
2-6 Gloss | LRV 85-86Snow White  
(25-30 Gloss) | LRV 83-84Sterling Silver  
(20 Gloss)Sunrise Yellow  
(20 Gloss)Tan Straw  
(20 Gloss)Blush Rose  
(20 Gloss)Forest Green  
(20 Gloss)Grey  
(65-75 Gloss)Mid Beige  
(20 Gloss)Pure Orange  
(20 Gloss)

## Custom Colors



Custom colors available

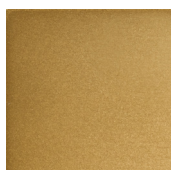
## Powder Coated, Bonded Metallic Finishes (Interior & Exterior) Formaldehyde-Free



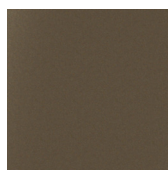
Dark Bronze



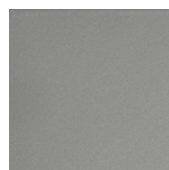
Forged Charcoal



Gold



Golden Bronze



Metallic Sterling Silver



Soft Nickel

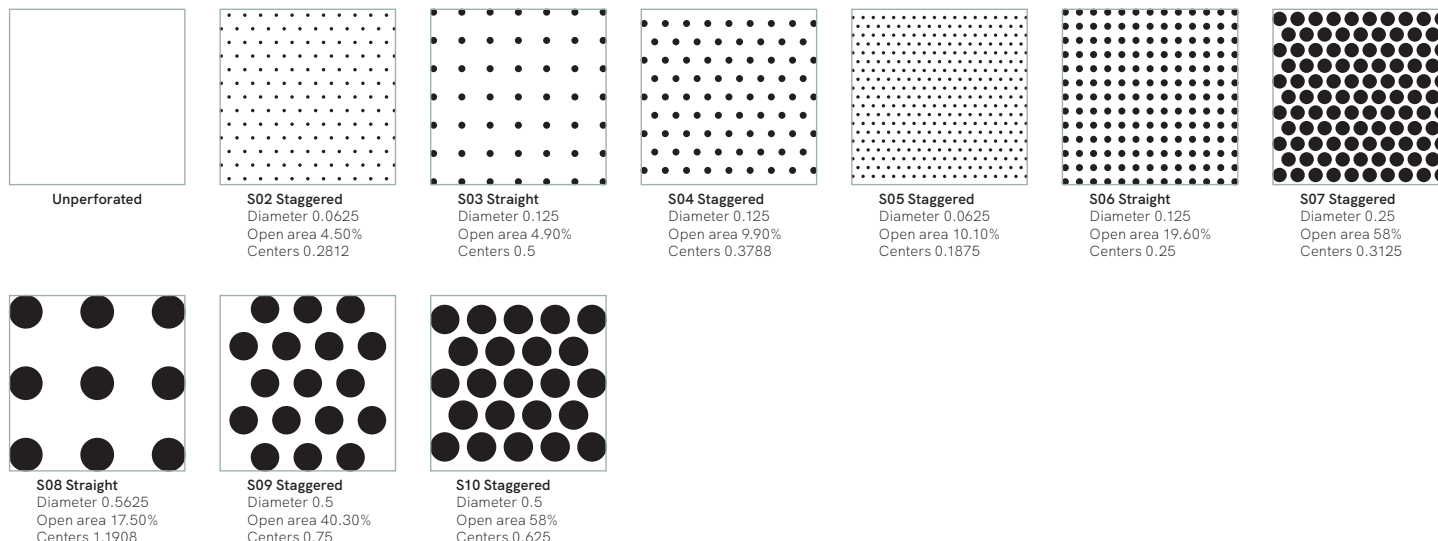


Blush Copper

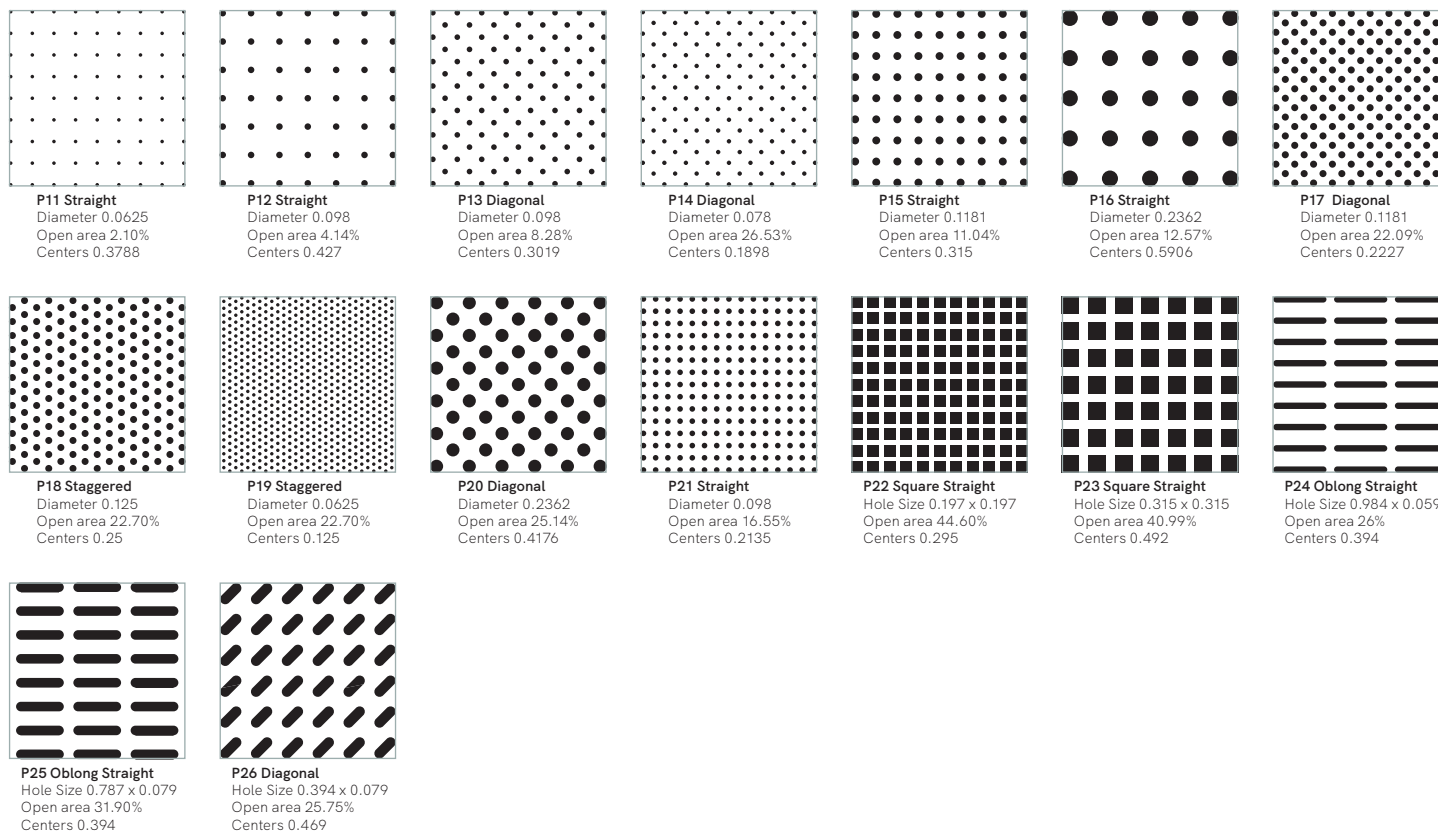
# PERFORATIONS

Perforation patterns may be limited or not available for some product styles and designs. Perforation border size varies based on product style, size, and perforation pattern. For specific details, please reach out to your Maxxit representative.

## Standard Perforations Angles - Staggered 60°



## Premium Perforations Angles - Diagonal 45° | Staggered 60°

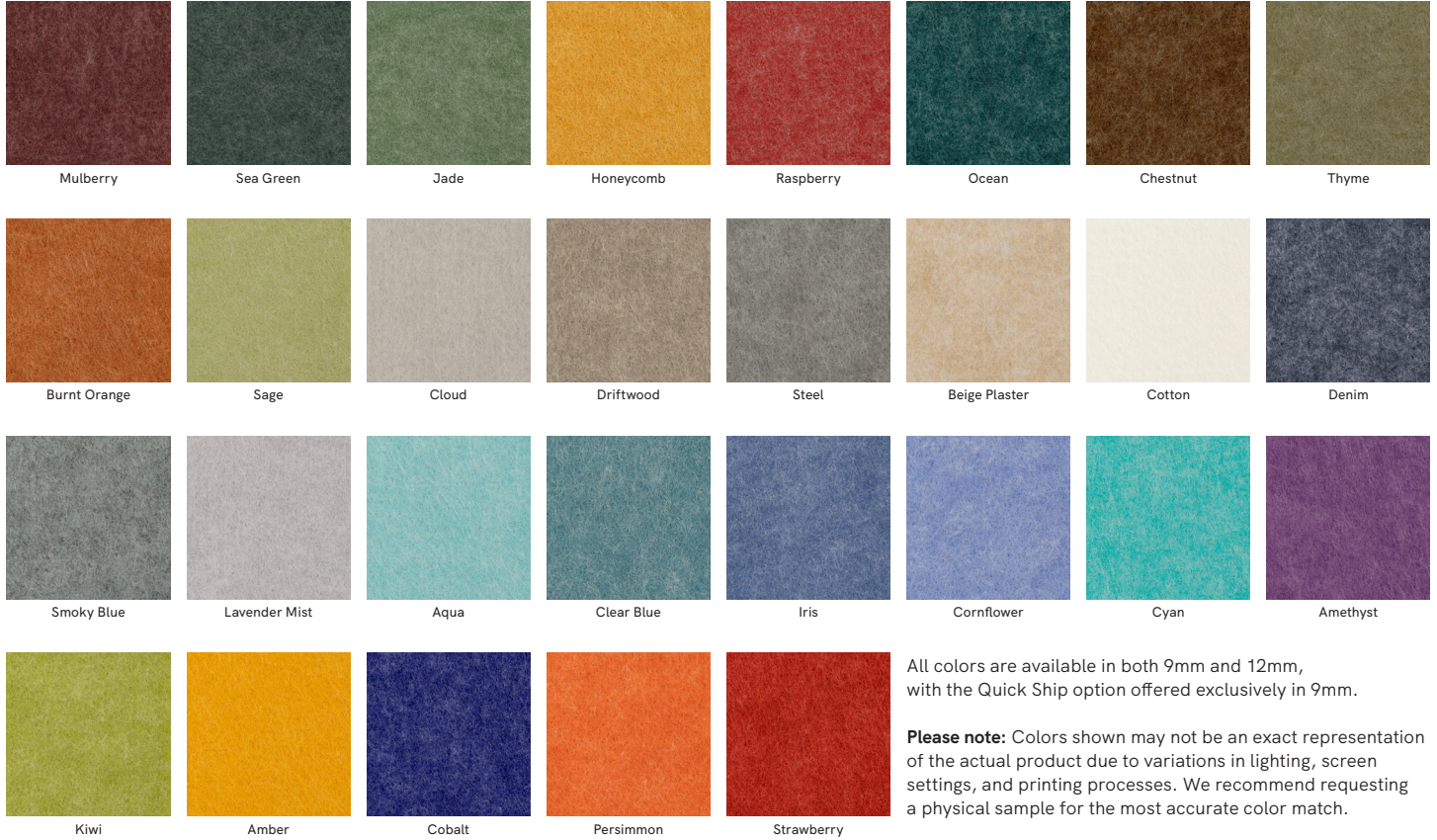






# COLOR SELECTION

## Standard Colors



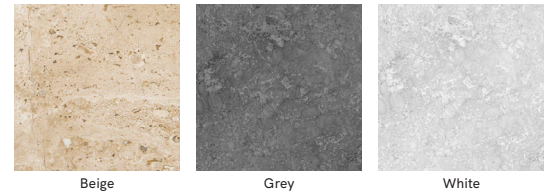
## Standard Colors - Quick Ship



## Woodgrain Print Options



## Limestone Print Options





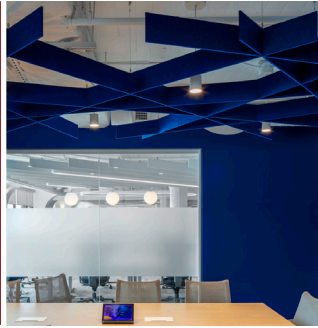


# AERO:Form™ DESIGNS

CLOUDS ▶



CROSSROADS OPEN CELL ▶  
Felt



CROSSROADS OPEN CELL ▶  
Metal



CUBE OPEN CELL ▶  
Felt, Blade



CUBE OPEN CELL ▶  
Felt, Profile



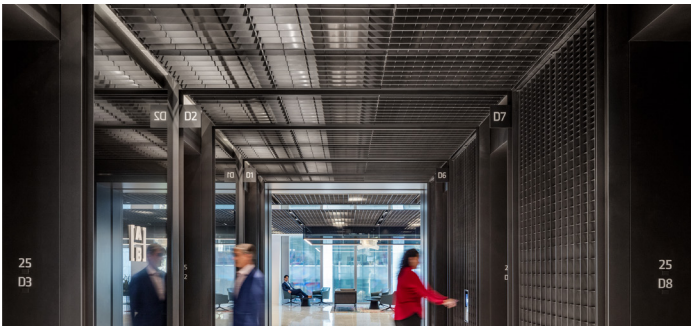
CUBE OPEN CELL ▶  
Metal, Extruded



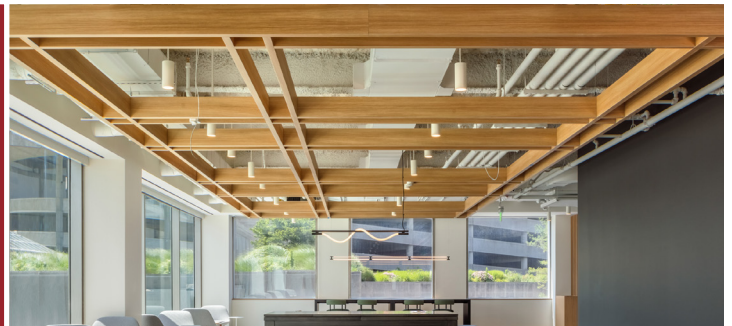
CUBE OPEN CELL ▶  
Metal, Fabricated



GRILLE OPEN CELL ▶



PARALLEL OPEN CELL ▶



PENDANTS ▶



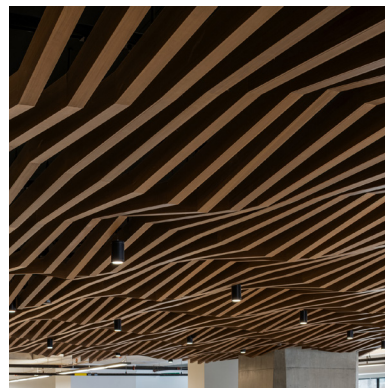
TRILATERAL OPEN CELL ▶





# WHERE CREATIVE ENGINEERING MEETS ARCHITECTURAL VISION

At Maxxit, we combine creative engineering, advanced manufacturing, and close collaboration to help architects and designers bring bold ideas to life. From standard to custom solutions, we turn imagination into precision-built reality.



## Co:LAB Studio

Our custom design service empowers architects and designers to realize unique visions through tailored solutions, material innovation, and expert collaboration — turning bold ideas into architectural realities.