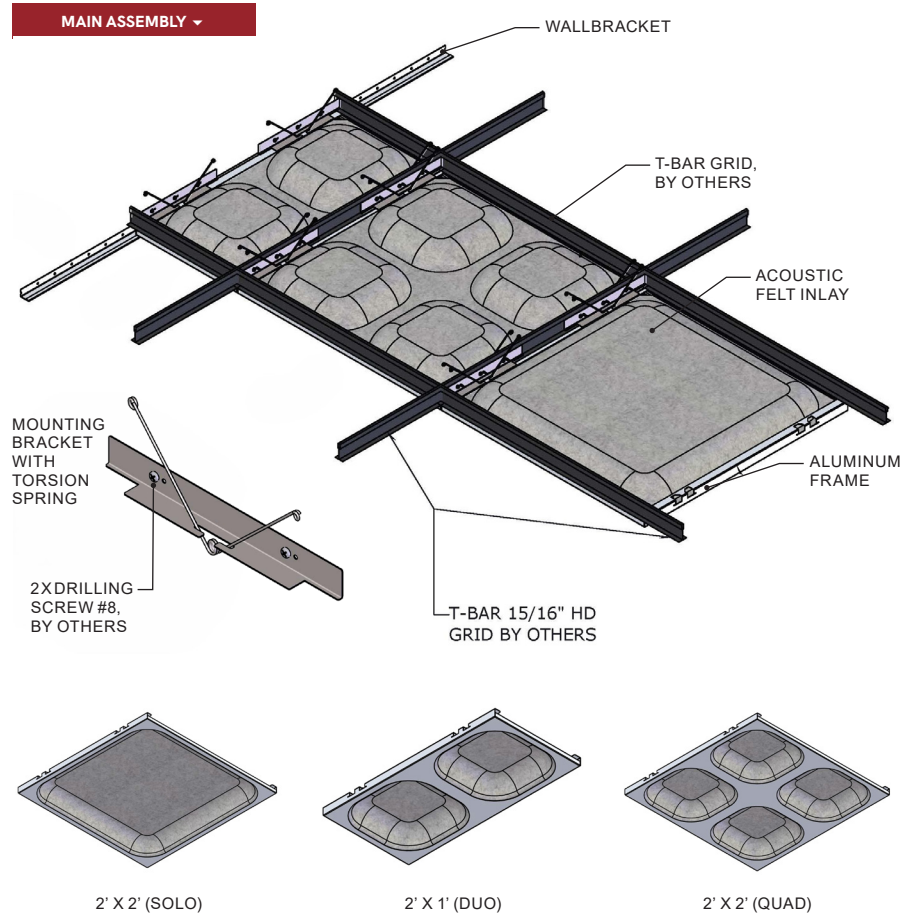




**Concave Panels** integrate metal and felt materials to enhance acoustic performance, durability and aesthetic appeal in modern interior spaces.



## PHYSICAL DATA

- Material - (PET) acoustic felt, 18 ga aluminum
- Felt thickness - 3/8"
- Fire Performance - Class A per ASTM E84, CAN/ULC
- Acoustics - NRC = 0.85 per ISO 11654
- Weight - 0.09 lbs./sq.ft.
- Warranty - One Year Limited
- Surface Finish (Aluminum) - Factory-applied polyester paint. Available in Standard Colors, Color Matched.
- Finish (Felt) - 30+ colors to choose from
- Variation - With all felt products color and texture may vary from order to order; adequate attic stock should be ordered.
- Seismic areas - Concave panels have been engineered for use in all seismic areas. Check with local code officials or a licensed engineer for additional requirements.

## SUSTAINABILITY

### LEED CONTRIBUTION - METAL

- LEED BD+C v4 (MR: Regional & Recycled Materials).
- Schools EQ: Acoustic Performance.
- ID+C EQ: Low-Emitting Materials.
- No VOCs.
- EPD available.
- Aluminum contains up to 80% recycled content.

### LEED CONTRIBUTION - FELT

- BD+C v4 (MR: Product Disclosure, Recycled Content).
- Schools EQ: Acoustic Performance.
- Up to 60% post-consumer PET felt.
- No VOCs.
- EPD & GREENGUARD Gold certified.

LEED® is a registered trademark of the U.S. Green Building Council

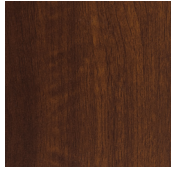
## FEATURES

- Combines metal and felt materials, featuring a curved shape that enhances both acoustic performance and aesthetic appeal.
- Self locating mounting brackets make for easy installation.
- Torsion spring attachment to most standard T-bar grids (supplied by others). T-bar can be exposed or concealed.
- Standard sizes - quick ship standard products available made to order.
  - ▶ 2' x 2' panel
  - ▶ 2' x 4' panel
  - ▶ 3' x 3' panel
- Cleanable using CDC recommended and EPA-approved disinfectants for fog, spray & wipe.
- Lighting integration - panels can be equipped with pot lights through a cutout placed in the center of the felt cavity (prespecified or cut on site).
- Integrates standard diffusers and sprinklers.
- Trim options include field-trimmable panels in either all aluminum or with a flat felt inlay. Angle ell brackets and push-down clips are included.
- Easy plenum access - torsion spring design allows for easy downward access panel removal. Panels remain hinged to suspension to avoid damage.

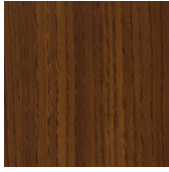


# WOOD LOOK FINISHES

## Standard Powder Coated Paint Finishes (Interior & Exterior) Formaldehyde-Free



National Walnut



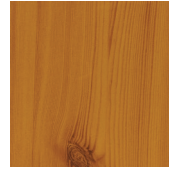
Chestnut



Rosewood



European Cherry



Knotty Pine



Oak Fine



Maple



American Douglas



American Maple



Teak

## Custom Colors

### FIND YOUR PERFECT MATCH

At Maxxit we have a passion for finishes; wood, metallic, oil rubbed, whatever your challenge is we can match it!



Send us a color sample so we can quickly provide a color match.

## Standard Laminated (Film) Finishes (Interior only). Formaldehyde-free



Canadian Oak



White Oak



American Natural



Italian Walnut



North Oak



Black Walnut

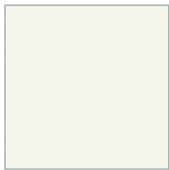
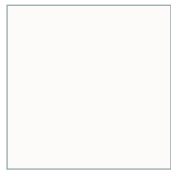
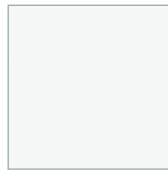
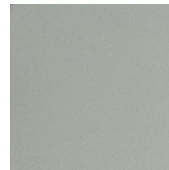


Brazilian Walnut

# STANDARD COLORS

Maxxit powder coat finishes offer superior chemical, scratch and UV resistance, they do not emit VOC's and are available in a broad range of textures, glosses and specialty looks.

## Powder Coated Paint Finishes (Interior & Exterior) Formaldehyde-Free

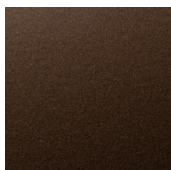
Black  
(25-35 Gloss)White  
(17-20 Gloss) | LRV 79-80Chalkstone White  
2-6 Gloss | LRV 85-86Snow White  
(25-30 Gloss) | LRV 83-84Sterling Silver  
(20 Gloss)Sunrise Yellow  
(20 Gloss)Tan Straw  
(20 Gloss)Blush Rose  
(20 Gloss)Forest Green  
(20 Gloss)Grey  
(65-75 Gloss)Mid Beige  
(20 Gloss)Pure Orange  
(20 Gloss)

## Custom Colors

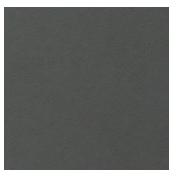


Custom colors available

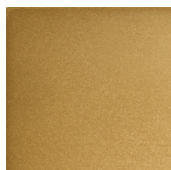
## Powder Coated, Bonded Metallic Finishes (Interior & Exterior) Formaldehyde-Free



Dark Bronze



Forged Charcoal



Gold



Golden Bronze



Metallic Sterling Silver



Soft Nickel



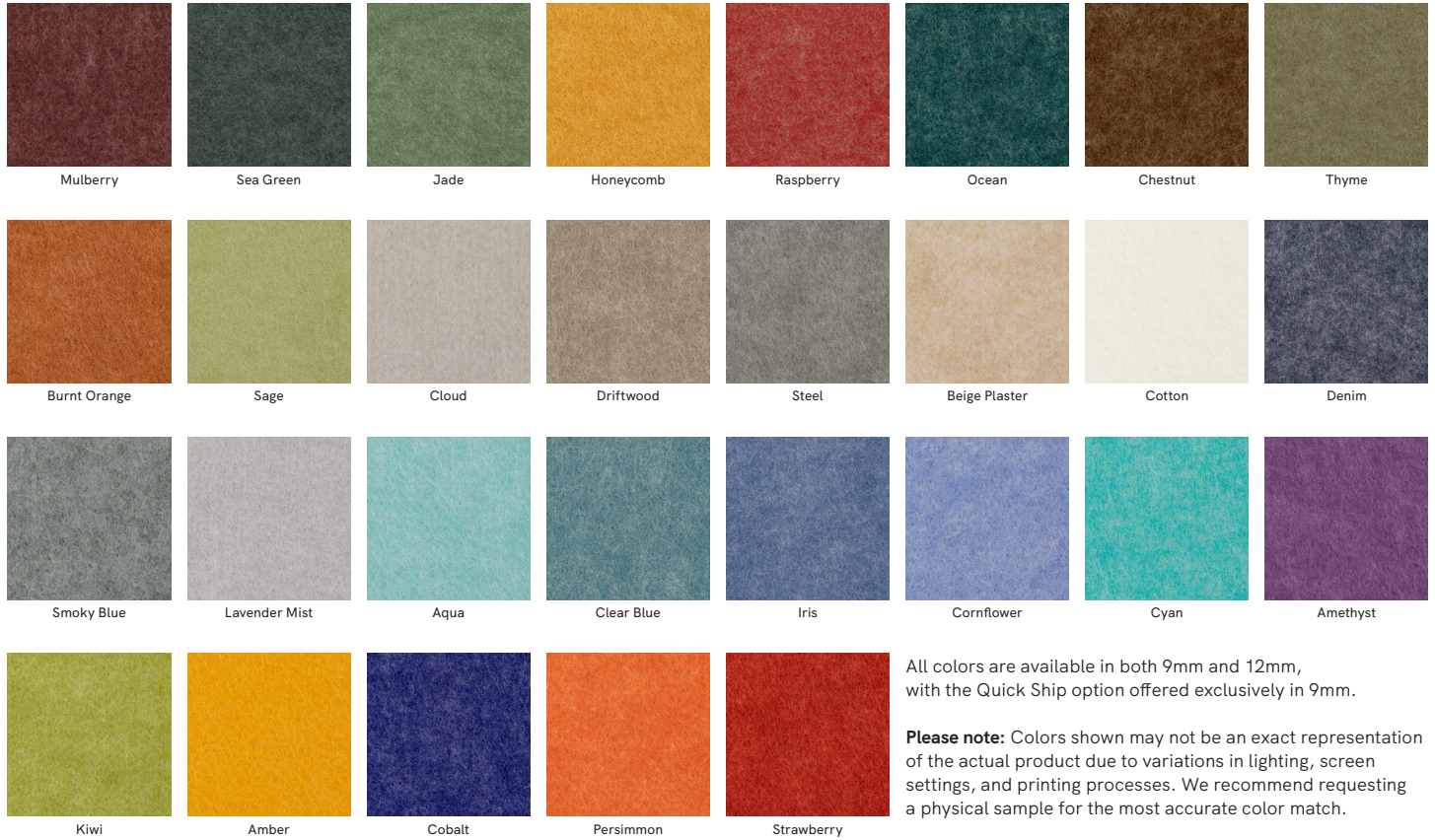
Blush Copper



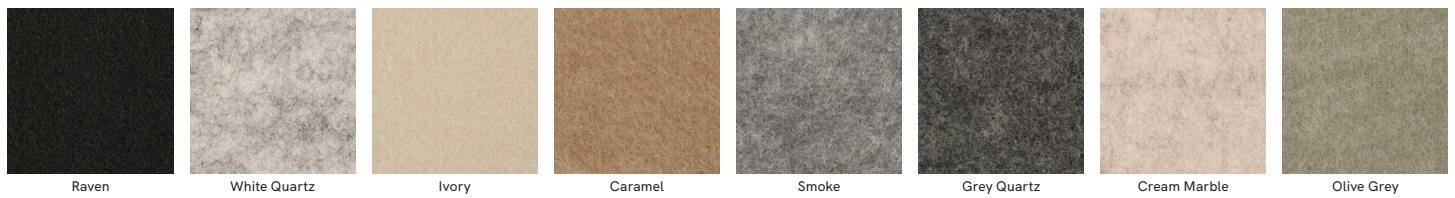


# COLOR SELECTION

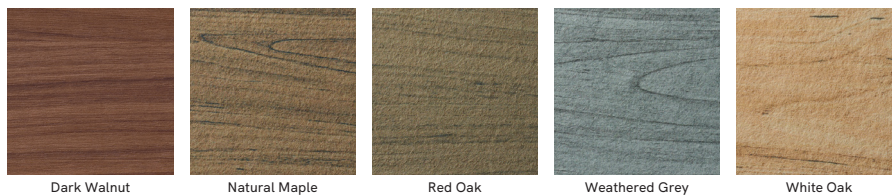
## Standard Colors



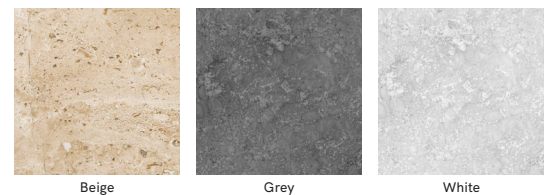
## Standard Colors - Quick Ship



## Woodgrain Print Options



## Limestone Print Options







# PANEL:Form™ DESIGNS

BACKLIT  
Ceiling



BACKLIT  
Walls



CANOPY PARTITIONS



CONCAVE



DIMENSIONAL



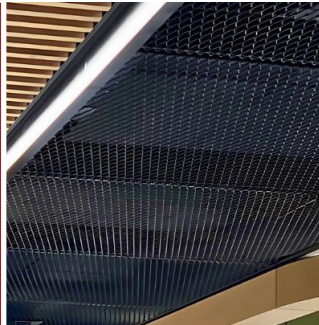
DESIGN PERFORMED  
Ceiling



DESIGN PERFORMED  
Walls



MESH



MOZAIX



QUIET WALL



RADIUS



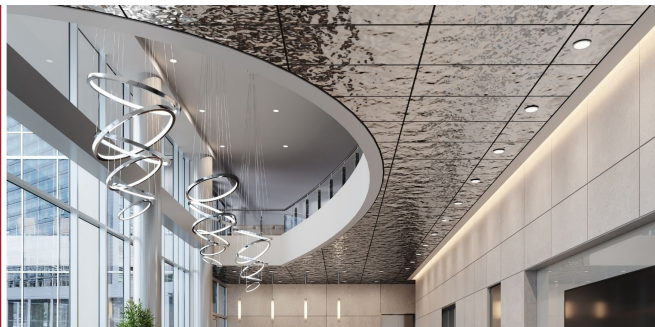
SEGMENTED



TRADITIONAL



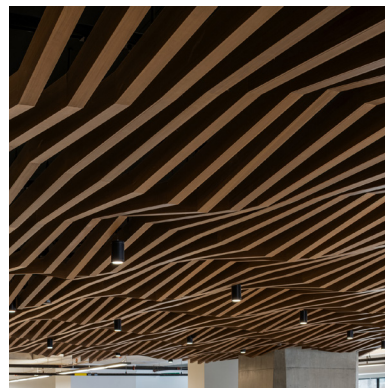
WATER RIPPLE





# WHERE CREATIVE ENGINEERING MEETS ARCHITECTURAL VISION

At Maxxit, we combine creative engineering, advanced manufacturing, and close collaboration to help architects and designers bring bold ideas to life. From standard to custom solutions, we turn imagination into precision-built reality.



## Co:LAB Studio

Our custom design service empowers architects and designers to realize unique visions through tailored solutions, material innovation, and expert collaboration — turning bold ideas into architectural realities.