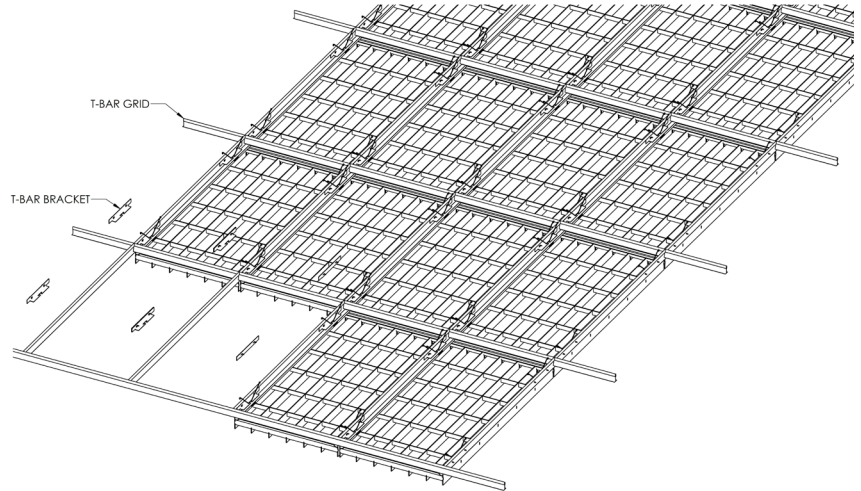


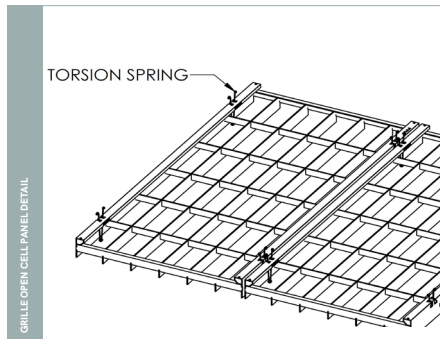


**Grille Open Cell** features an open linear structure and industrial aesthetic, delivering dynamic, high-impact commercial interiors.

#### MAIN ASSEMBLY ▼



Attaches to 15/16" HD Grid (shown) or Maxxit's custom suspension system.



## PHYSICAL DATA

- Material substrates – Aluminum | Extruded
- Thickness .125"
- Fire Performance – Class A: Tested per ASTM E84. Flame Spread Index 25 or less. Smoke Developed Index 50 or less. CAN/ULC S102 surface burning characteristics. Flame Spread Rating 25 or less. Smoke Developed Classification 50 or less.
- Weight – depends on cell configuration (1.2 - 1.8 lbs/sq ft)
- Warranty – One Year Limited
- Surface Finish – Factory-applied polyester paint. Available in Standard Colors and Color Matched.
- Seismic areas – Protero has been engineered for use in all seismic areas. Installations may require additional attachment from panel to suspension bar. Check with local code officials or a licensed engineer for additional requirements.

## SUSTAINABILITY

### LEED CONTRIBUTION –

- LEED BD+C v4 (MR: Regional & Recycled Materials).
- ID+C EQ: Low-Emitting Materials.
- No VOCs.
- EPD available.
- Aluminum contains up to 80% recycled content.

LEED® is a registered trademark of the U.S. Green Building Council

## FEATURES

- Open structure design enhances visual depth and promotes airflow for a sleek, industrial look.
- High open area percentage (over 70%) is available when required in sprinklered areas to allow unobstructed water flow.
- Attaches to 15/16" HD Grid or custom suspension system.
- Standard panel sizes
  - ▶ 2' x 2' panel
  - ▶ 2' x 4' panel
- Grille configurations are available in rectangular and square formats. Standard cell sizes are listed below, custom sizes are available:
  - ▶ W/L: 4" x 6", 4" x 8", 6" x 6", 6" x 8", 8" x 6", 8" x 8", 12" x 6"
- Torsion spring design allows for easy plenum access. Panels can remain hinged to suspension to avoid damage.
- Cleanable using CDC recommended and EPA-approved disinfectants for fog, spray & wipe.
- Optional utility troughs discreetly house MEP systems while ensuring easy access for maintenance.
- Designed for exact fit - no site cutting required.



# STANDARD COLORS

Maxxit powder coat finishes offer superior chemical, scratch and UV resistance, they do not emit VOC's and are available in a broad range of textures, glosses and specialty looks.

## Powder Coated Paint Finishes (Interior & Exterior) Formaldehyde-Free



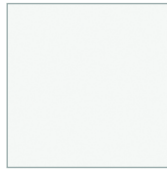
Black  
(25-35 Gloss)



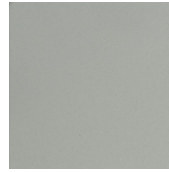
White  
(17-20 Gloss) | LRV 79-80



Chalkstone White  
2-6 Gloss | LRV 85-86



Snow White  
(25-30 Gloss) | LRV 83-84



Sterling Silver  
(20 Gloss)



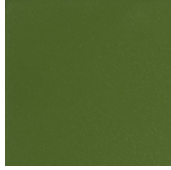
Sunrise Yellow  
(20 Gloss)



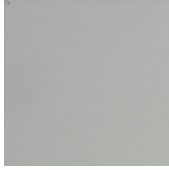
Tan Straw  
(20 Gloss)



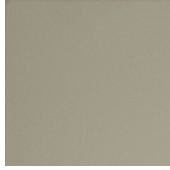
Blush Rose  
(20 Gloss)



Forest Green  
(20 Gloss)



Grey  
(65-75 Gloss)



Mid Beige  
(20 Gloss)



Pure Orange  
(20 Gloss)

### Custom Colors



Custom colors available

## Powder Coated, Bonded Metallic Finishes (Interior & Exterior) Formaldehyde-Free



Dark Bronze



Forged Charcoal



Gold



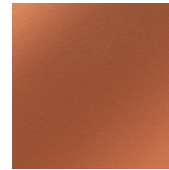
Golden Bronze



Metallic Sterling Silver



Soft Nickel



Blush Copper







# AERO:Form™ DESIGNS

CLOUDS ▶



CROSSROADS OPEN CELL ▶  
Felt



CROSSROADS OPEN CELL ▶  
Metal



CUBE OPEN CELL ▶  
Felt, Blade



CUBE OPEN CELL ▶  
Felt, Profile



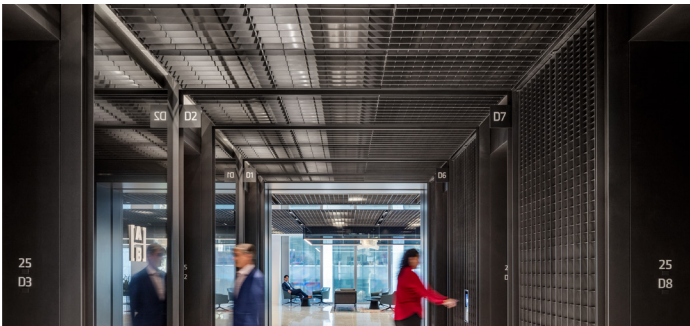
CUBE OPEN CELL ▶  
Metal, Extruded



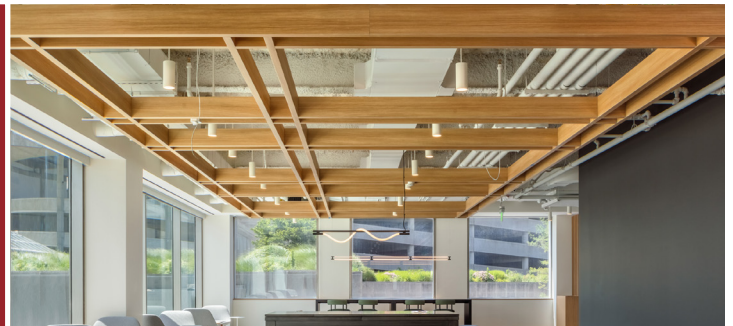
CUBE OPEN CELL ▶  
Metal, Fabricated



GRILLE OPEN CELL ▶



PARALLEL OPEN CELL ▶



PENDANTS ▶



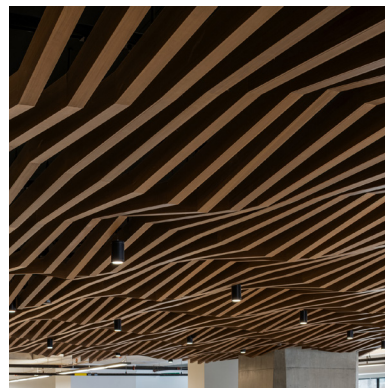
TRILATERAL OPEN CELL ▶





# WHERE CREATIVE ENGINEERING MEETS ARCHITECTURAL VISION

At Maxxit, we combine creative engineering, advanced manufacturing, and close collaboration to help architects and designers bring bold ideas to life. From standard to custom solutions, we turn imagination into precision-built reality.



## Co:LAB Studio

Our custom design service empowers architects and designers to realize unique visions through tailored solutions, material innovation, and expert collaboration — turning bold ideas into architectural realities.