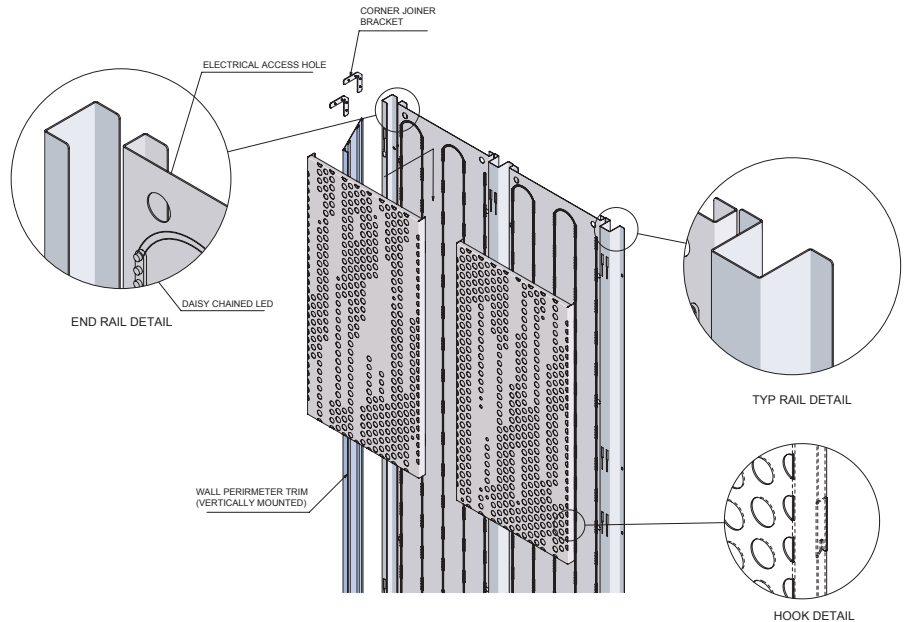




Backlit Wall Panels combine perforated shapes and dramatic illumination for wall designs that make a statement.

#### MAIN ASSEMBLY ▾



## PHYSICAL DATA

- Material substrates – Aluminum | Fabricated
- Thickness .041" - .060" design dependent
- Fire Performance - Class A: Tested per ASTM E84. Flame Spread Index 25 or less. Smoke Developed Index 50 or less. CAN/ULC S102 surface burning characteristics. Flame Spread Rating 25 or less. Smoke Developed Classification 50 or less.
- Weight - Varies from 1.0-1.5 lbs./sq.ft.
- Warranty - One Year Limited
- Surface Finish - Factory-applied polyester paint. Available in Standard Colors, Color Matched and Wood Look Powder-Coated and laminated.
- Seismic areas - Backlit Wall panels have been engineered for use in all seismic areas. Check with local code officials or a licensed engineer for additional requirements.

## SUSTAINABILITY

### LEED CONTRIBUTION -

- LEED BD+C v4 (MR: Regional & Recycled Materials).
- Schools EQ: Acoustic Performance.
- ID+C EQ: Low-Emitting Materials.
- No VOCs.
- EPD available.
- Aluminum contains up to 80% recycled content.

LEED® is a registered trademark of the U.S. Green Building Council

## FEATURES

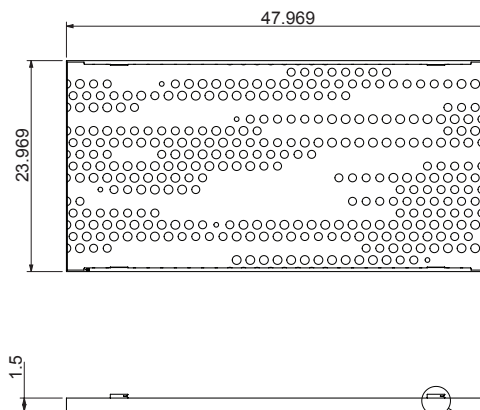
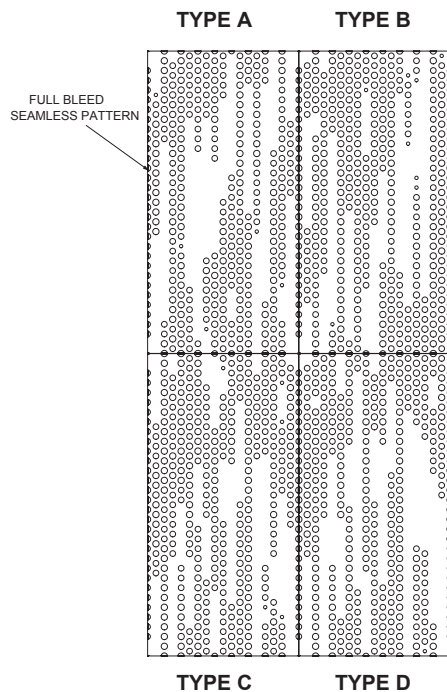
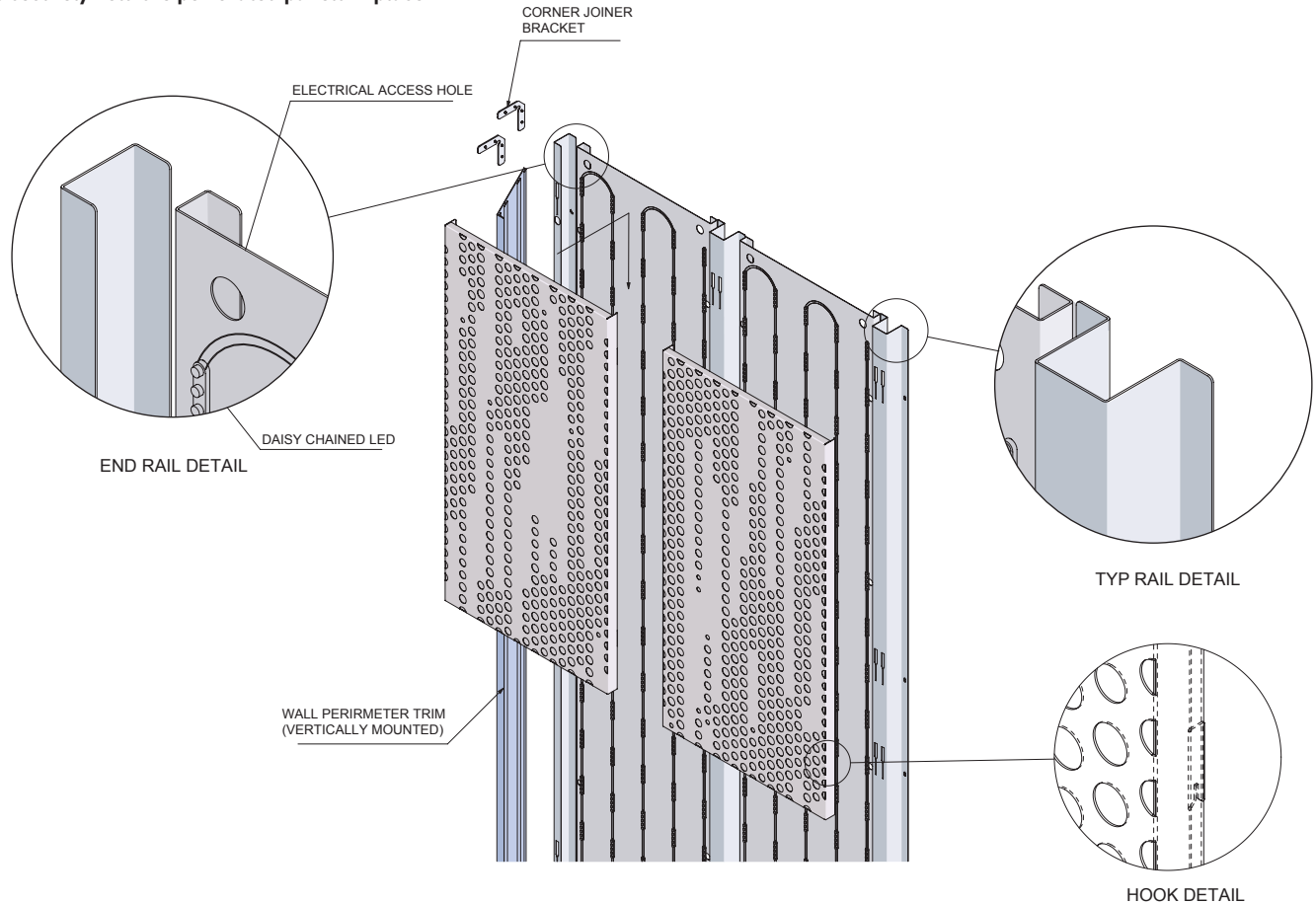
- Create custom perforation patterns for elevated design.
- Unlimited finish options - custom colors, wood looks, and films.
- Custom sizes & shapes - At Maxxit custom is what we do best. We will make any shape or size you can design.
- Perforations run to the panel edge and are matched to adjacent panels for a more seamless appearance.
- The wall attachment system includes a series of rails and hooks designed to securely hold the perforated panels in place.
- Cleanable using CDC recommended and EPA-approved disinfectants for fog, spray & wipe.
- Backlighting options include White and RGBW LED (see Lighting Specification page for details).

Physical data, Features and Sustainability on this page pertain to the Panels. Refer to the Lighting section for details on lighting.

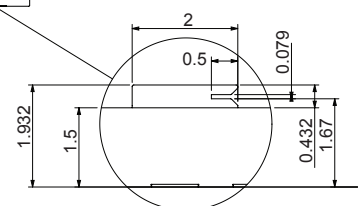


# PANEL SPECIFICATION

The wall attachment system includes a series of rails and hooks designed to securely hold the perforated panels in place.



The perforated surface is designed with four distinct tiles arranged for continuous pattern design. Arrange of standard and custom perforation options is available.



# LIGHTING SPECIFICATION

**The Maxxit Backlit Wall panel system** integrates LED lighting directly into its lightweight, perforated metal wall panels, creating a sophisticated, seamless lighting solution. Designed with ease of installation in mind, the back-lit panels feature a modular system that allows for quick assembly and consistent illumination across large spaces. With customizable options for brightness, color temperature, and control systems, Backlit Wall panels are ideal for commercial environments, offering both functional lighting and a high-end, modern look. Available in White and RGB versions.

BACKLIT WALL PANELS BACKLIGHTING SPECIFICATIONS		
PHYSICAL DATA	WHITE	RGBW
TOTAL LUMENS	2000-2200 Lm / Panel	1800 Lm / Panel
POWER CONSUMPTION	16 Watts / Panel	72 Watts / Panel
VOLTAGE	24 Volt DC	24 Volt DC
COLOR TEMP	3200K - 7100K	up to 6500 K (White) • Red • Green • Blue
CRI	Up to 84	80+
DIMMING OPTIONS	0-10V dimmable down to 1%; non-dimmable	DMX/RDM 0.1%-100%
EFFICACY	157 Lm / w	Varies depending on color temperature and wattage
BEAM ANGLE	175°	117°
SIZE (L X W X D)	48" x 24" x 2.75" (40 modules per panel)	48" x 24" x 2.75" (12 bars/108 LEDs per panel)
CERTIFICATIONS	UL Recognized (C-US) #E219167, UL Classified (C-US) #E229508, CE, ROHS • IP66 rated: for dry, damp or wet location	UL Recognized Component, IP20
OPERATING TEMPERATURE	-40°C to +60°C (-40°F to +140°F)	-20°C (-4°F) ~ +60°C (+140°F)
POWER CABLE	Plenum rated speaker cable, 16AWG, white	Supplied by installer



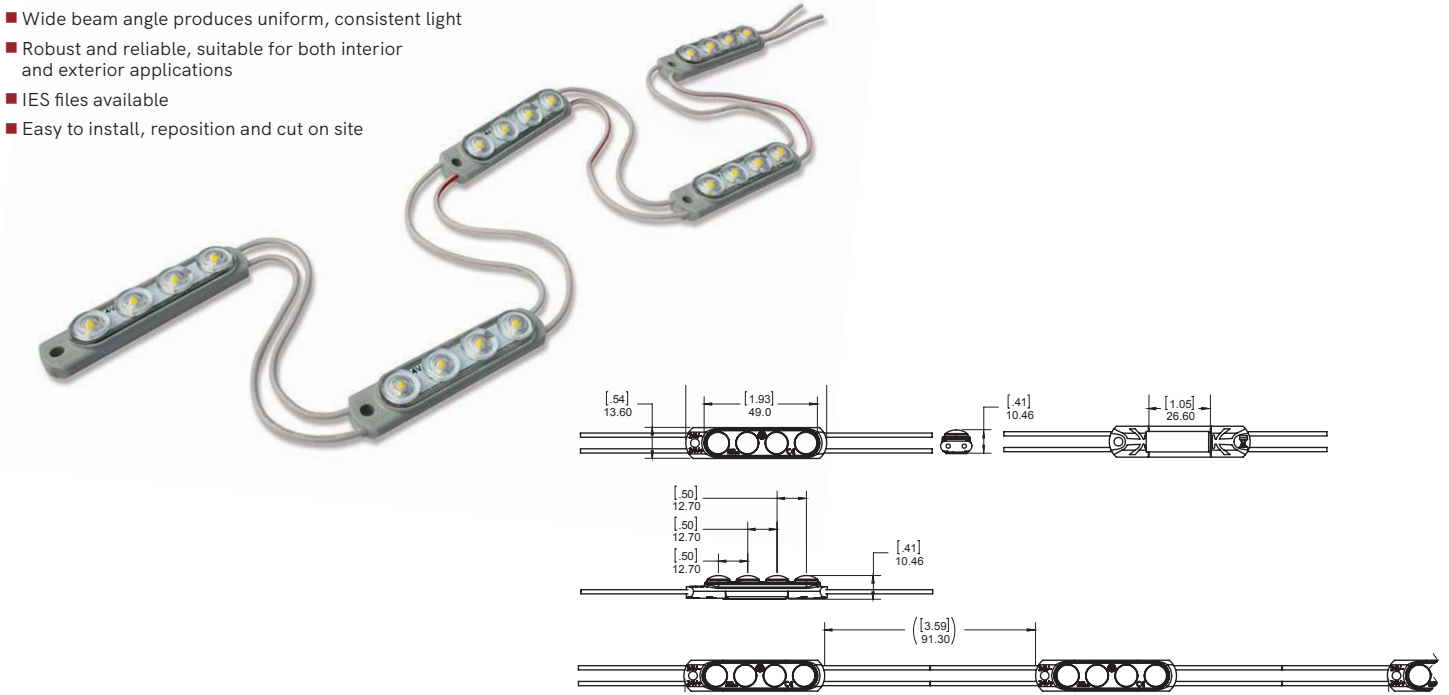




# LIGHTING SPECIFICATION

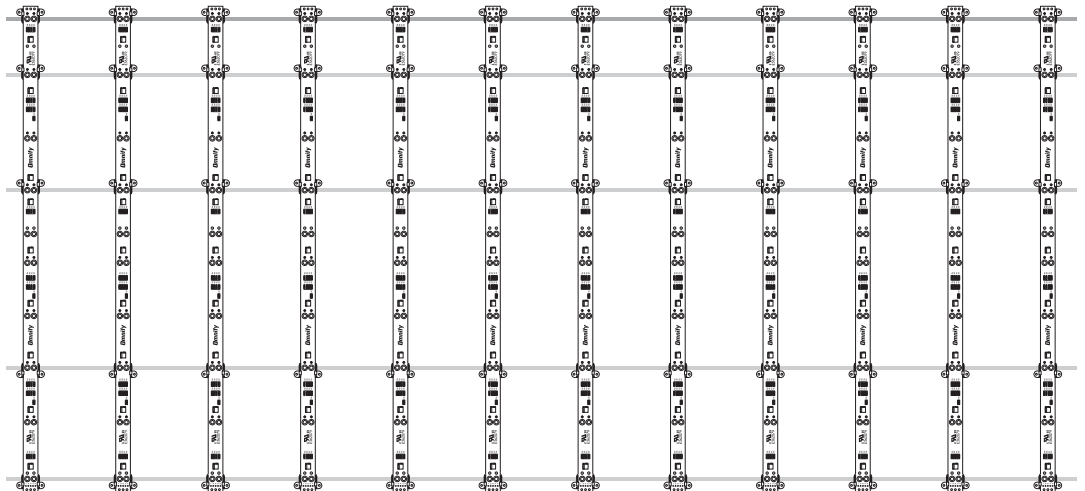
## White Backlighting

- Very low power consumption, making it a sustainable, energy efficient option for all environments
- Wide beam angle produces uniform, consistent light
- Robust and reliable, suitable for both interior and exterior applications
- IES files available
- Easy to install, reposition and cut on site



## RGBW Backlighting

- A reliable RGBW 4-in-1 5050 LEDs with high performance
- Forward facing diodes for direct color lux and light uniformity
- Wide range of color options, include white (up to 6500K), red, green and blue
- Indoor use only







# WOOD LOOK FINISHES

## Standard Powder Coated Paint Finishes (Interior & Exterior) Formaldehyde-Free



## Custom Colors

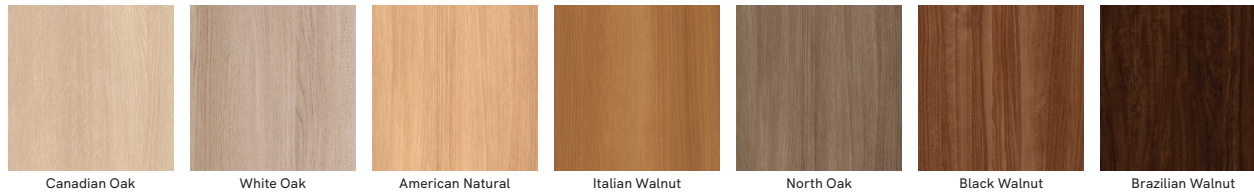
### FIND YOUR PERFECT MATCH

At Maxxit we have a passion for finishes; wood, metallic, oil rubbed, whatever your challenge is we can match it!



Send us a color sample so we can quickly provide a color match.

## Standard Laminated (Film) Finishes (Interior only). Formaldehyde-free



# STANDARD COLORS

Maxxit powder coat finishes offer superior chemical, scratch and UV resistance, they do not emit VOC's and are available in a broad range of textures, glosses and specialty looks.

## Powder Coated Paint Finishes (Interior & Exterior) Formaldehyde-Free

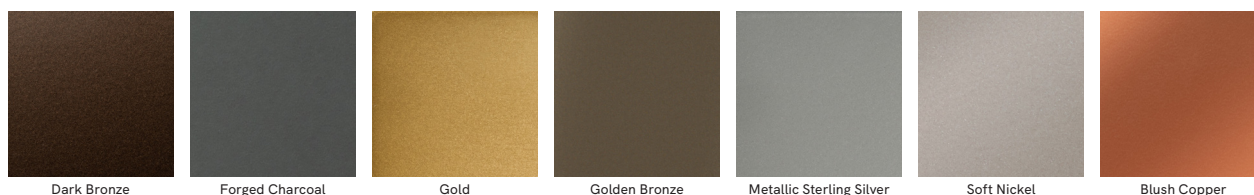


## Custom Colors



Custom colors available

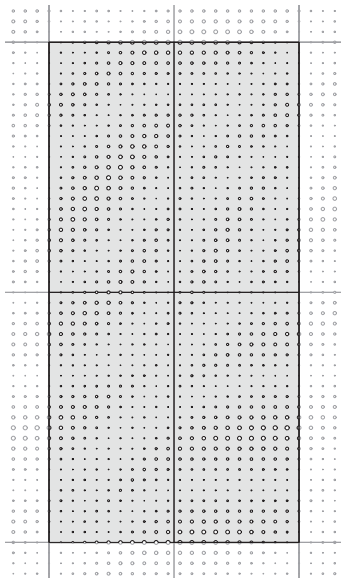
## Powder Coated, Bonded Metallic Finishes (Interior & Exterior) Formaldehyde-Free

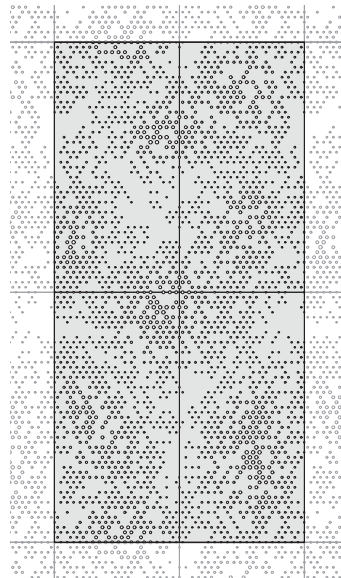
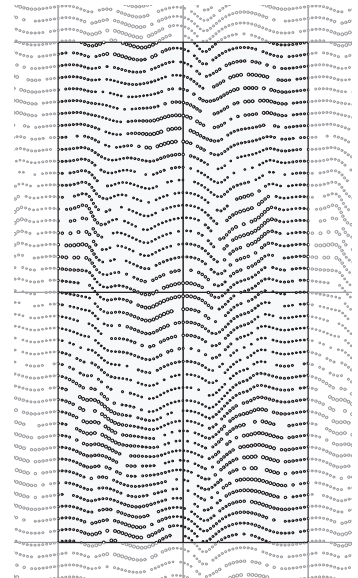
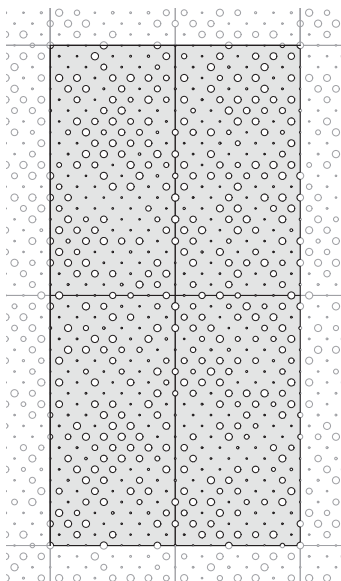
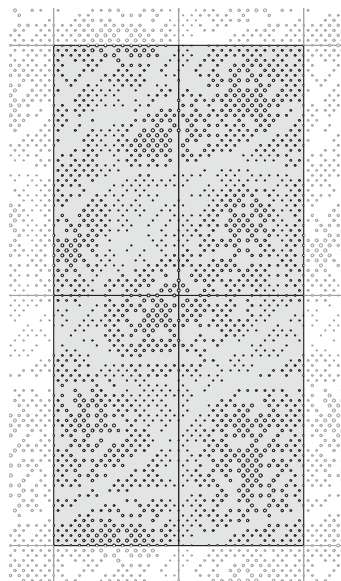




# MADE TO ORDER PATTERNS

**Custom Patterns** Six distinct design families, each with customizable parameters. Whether it's adjusting hole diameter, pattern density, or scale, we can create virtually endless variations of each pattern to suit individual needs and preferences. **Create your perfect design:**


**Aqua Flow**

**Bitstream**

**Nebula Mist**

**Ripple**

**Starlight**

**Woodland**

**Perforated Imaging** Perforated imaging employs high-tech manufacturing methods to create detailed images using perforations. Supply us an image, logo or text and we'll apply it onto a metal panel, providing your space with a customized design.







# PANEL:Form™ DESIGNS

BACKLIT  
Ceiling



BACKLIT  
Walls



CANOPY PARTITIONS



CONCAVE



DIMENSIONAL



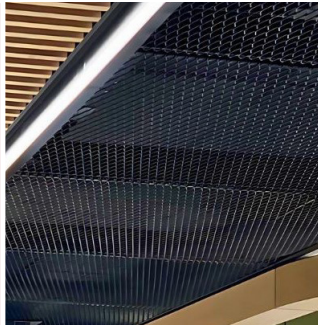
DESIGN PERFORMED  
Ceiling



DESIGN PERFORMED  
Walls



MESH



MOZAIX



QUIET WALL



RADIUS



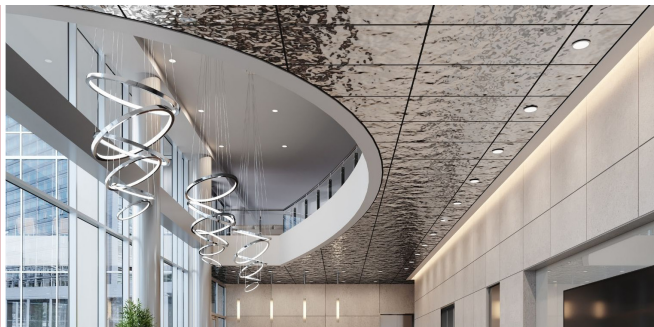
SEGMENTED



TRADITIONAL



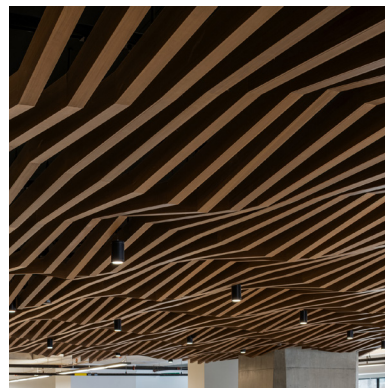
WATER RIPPLE





# WHERE CREATIVE ENGINEERING MEETS ARCHITECTURAL VISION

At Maxxit, we combine creative engineering, advanced manufacturing, and close collaboration to help architects and designers bring bold ideas to life. From standard to custom solutions, we turn imagination into precision-built reality.



## Co:LAB Studio

Our custom design service empowers architects and designers to realize unique visions through tailored solutions, material innovation, and expert collaboration — turning bold ideas into architectural realities.